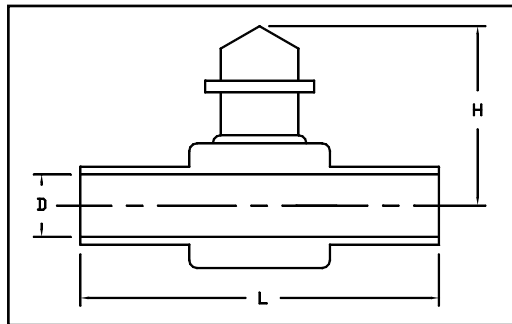


MDPE
PolyValve, IPS Gas
ASTM D2513



Dimensions and weights are approximate and subject to change. Please call for sizes not listed.

IPS Pipe Size	Nominal OD (in)	Pressure Class (psi)	Bore	Dimension (in)			Weight (Lbs)
				D	L	H	
3/4"	1.050	80	Full	0.75	10	3 3/8	1.2
1"	1.315	80	Reduced	0.90	10	3 3/8	1.2
1 1/4"	1.660	89	Reduced	0.90	10	3 3/8	1.2
2"	2.375	80	Full	1.85	12 3/4	6 1/2	3.8
			Reduced	1.35	13	4 1/2	3.1
3"	3.500	76	Reduced	1.85	12 3/4	6 1/2	4.5
4"	4.500	76	Full	3.62	20	10	19.5
			Reduced	2.50	15	18	9
6"	6.625	76	Full	5.22	20	12 1/2	38
			Reduced	3.62		10 3/8	21
8"	8.625	76	Full	6.66	69 1/2	12 1/2	67
			Reduced	4.78	20		43
12"	12.750	76	Full	9.90	84	21	305

San Francisco
Los Angeles
Bakersfield
Reno

511 Tunnel Avenue, Brisbane, California 94005
2376 First Street, La Verne, California 91750
5221 Gilmore Avenue, Bakersfield, California 93308
675-B Edison Way, Reno, Nevada 89502

415-467-4630
909-596-6887
661-326-7800
775-856-1888

FAX 415-467-1010
FAX 909-596-7884
FAX 661-326-7805
FAX 775-856-1844