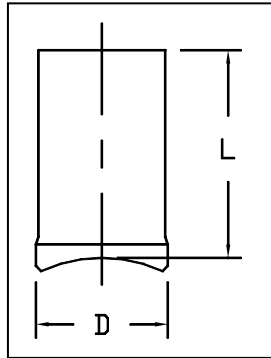


HDPE
Branch Saddle, IPS Molded
AWWA C901 or C906



Dimensions and weights are approximate and subject to change. Please call for sizes not listed.

Main IPS Pipe Size	Outlet		Pressure Class	Dimension (in)		Weight (Lbs)
	IPS Pipe Size	Nominal OD (in)		L	B	
4" - 48"	3/4"	1.050*	160	3	1 1/2	0.2
			200			
	1"	1.315*	160	3	1 3/4	
			200			
6" - 48"	1 1/4"	1.660*	160	3 1/4	1 3/4	0.3
	1 1/2"	1.900*	160	3 1/2	2 1/8	
	2"	2.375*	160	3 1/4	2 1/2	
			200	3 5/8	2 1/2	
8" - 48"	3"	4.500*	100	4	5	1
			160			
			200			
8" - 48"	4"	4.500*	100	4	5	2
			160			
			200			
12" - 48"	6"	1.660*	100	6	7	3
			160			

* Meets AWWA

Requires Special Heaters & Equipment to Install.
Always check availability of equipment for rental or purchase before ordering.

San Francisco	511 Tunnel Avenue, Brisbane, CA 94005	415-467-4630	FAX 415-467-1010
Los Angeles	1304 E. San Bernardino Ave., San Bernardino, CA 92408	909-799-7800	FAX 909-799-5558
Bakersfield	5221 Gilmore Ave., Bakersfield, CA 93308	661-326-7800	FAX 661-326-7805
Reno	675-B Edison Way, Reno, NV 89502	775-856-1888	FAX 775-856-1844