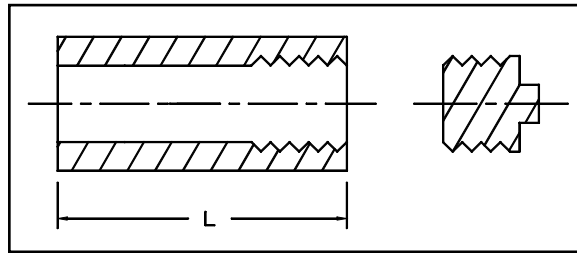


HDPE  
Clean Out, IPS



Dimensions and weights are approximate and subject to change. Please call for sizes not listed.

IPS Pipe Size	Nominal OD (in)	DR	Dimension (in)	Weight (Lbs)
			L	
2"	2.375	11	6	1
3"	3.500	11	6	1 1/2
4"	4.500	17	6	2
		11		
6"	6.625	17	6	3
		11		
8"	8.625	11	6	5
10"	10.753	11	6	8
12"	12.750	11	6	11

Cleanouts are rated for Gravity or Low Pressure (6" & down) Service.  
Cleanouts are available either with or without Plugs.