

HDPE PE 4710 Fittings Submittal Sheet

AWWA C901 and C906

90° Elbow – Page 2

Transition NPT – Page 9

45° Elbow – Page 3

PolyValve – Page 10

Equal Tee – Page 4

90° Elbow Sweep – Page 11

Reducer – Page 5

60° Elbow Sweep – Page 12

End Cap – Page 6

45° Elbow – Page 13

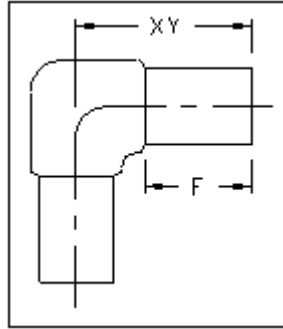
Flange Adapter – Page 7 - 8

30° Elbow – Page 14

This publication is intended for use as a products offering brochure. The technical information in this publication does not constitute a guarantee or warranty for piping installations because the conditions of use are beyond individual controls. The user of this information assumes all risk associated with its use. P&F Distributors has made every reasonable effort to ensure accuracy, but the information in this publication may not be complete, especially for special or unusual applications. Changes to this publication may occur from time to time without notice. Please contact P&F Distributors to determine if you have the most current edition.

Revised 9/11/2024

HDPE PE4710
Elbow, 90° IPS Molded
AWWA C901 or C906



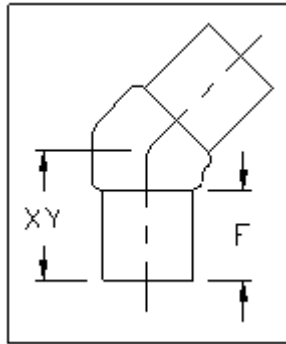
Dimensions and weights are approximate and subject to change. Please call for sizes not listed.

IPS Pipe Size	Nominal OD (in)	Dimension Ratio (DR)	Dimension (in)		Weight (lbs)
			F	XY	
3/4"	1.050	11	1½	3	0.1
1"	1.315	11	1½	3	0.1
1¼"	1.660	11	2½	4	0.2
1½"	1.900	11	3	4½	0.2
2"	2.375	11	3	5	0.5
3"	3.500	17	3	5⅝	1
		11			
4"	4.500	17	3	6	2.5
		11			
6"	6.625	17	4	8¼	6
		11			
8"	8.625	17	6	11¾	12
		11			
10"	10.750	17	6	13¾	22
		11			
12"	12.750	17	7½	15¾	35
		11			

Revised 02/13/2017

<i>San Francisco</i>	<i>511 Tunnel Avenue, Brisbane, CA 94005</i>	<i>415-467-4630</i>	<i>FAX 415-467-1010</i>
<i>Los Angeles</i>	<i>1304 E. San Bernardino Ave., San Bernardino, CA 92408</i>	<i>909-799-7800</i>	<i>FAX 909-799-5558</i>
<i>Bakersfield</i>	<i>4039-C Well Tech Way, Bakersfield, CA 93308</i>	<i>661-589-7300</i>	<i>FAX 661-589-7377</i>
<i>Reno</i>	<i>675-B Edison Way, Reno, NV 89502</i>	<i>775-856-1888</i>	<i>FAX 775-856-1844</i>

HDPE PE4710
Elbow, 45° IPS Molded
AWWA C901 or C906



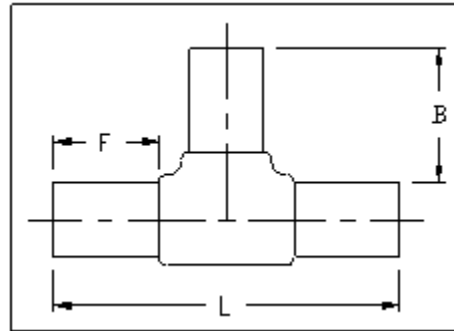
Dimensions and weights are approximate and subject to change. Please call for sizes not listed.

IPS Pipe Size	Nominal OD (in)	Dimension Ratio (DR)	Dimension (in)		Weight (lbs)
			F	XY	
¾"	1.050	11	2	2¼	0.1
1"	1.315	11	2	2½	0.1
1¼"	1.660	11	2½	2¾	0.2
1½"	1.900	11	2½	3	0.2
2"	2.375	11	2½	3¼	0.4
3"	3.500	17	3	5⅜	2
		11			
4"	4.500	17	3	5	2
		11			
6"	6.625	17	4	6½	5
		11			
8"	8.625	17	6	10	12
		11			
10"	10.750	17	6	13¼	21
		11			
12"	12.750	17	7½	15¾	30
		11			

Revised 02/13/17

San Francisco	511 Tunnel Avenue, Brisbane, CA 94005	415-467-4630	FAX 415-467-1010
Los Angeles	1304 E. San Bernardino Ave., San Bernardino, CA 92408	909-799-7800	FAX 909-799-5558
Bakersfield	4039-C Well Tech Way, Bakersfield, CA 93308	661-589-7300	FAX 661-589-7377
Reno	675-B Edison Way, Reno, NV 89502	775-856-1888	FAX 775-856-1844

HDPE PE4710
Tee, IPS Molded
AWWA C901 or C906



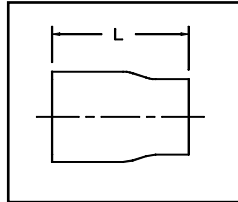
Dimensions and weights are approximate and subject to change. Please call for sizes not listed.

IPS Pipe Size	Nominal OD (in)	Dimension Ratio (DR)	Dimension (in)			Weight (lbs)
			L	F	B	
¾"	1.050	11	5¾	1⅝	3	0.3
1"	1.315	11	6	1⅝	3	0.3
1¼"	1.660	11	8	2½	4½	0.3
1½"	1.900	11	9	3	4½	0.5
2"	2.375	11	10	2¾	5	1
3"	3.500	17	11½	3	5⅝	2
		11				
4"	4.500	17	12½	3	6	3
		11				
6"	6.625	17	16½	4	8¼	10
		11				
8"	8.625	17	24	6	12	22
		11				
10"	10.750	17	27	6	8	36
		11				
12"	12.750	17	31	7½	9½	57
		11				

Revised 02/13/2017

San Francisco	511 Tunnel Avenue, Brisbane, CA 94005	415-467-4630	FAX 415-467-1010
Los Angeles	1304 E. San Bernardino Ave., San Bernardino, CA 92408	909-799-7800	FAX 909-799-5558
Bakersfield	4039-C Well Tech Way, Bakersfield, CA 93308	661-589-7300	FAX 661-589-7377
Reno	675-B Edison Way, Reno, NV 89502	775-856-1888	FAX 775-856-1844

HDPE
Reducer, IPS Concentric Molded
AWWA C901 or C906



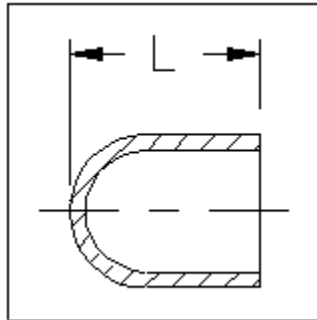
Dimensions and weights are approximate and subject to change. Please call for sizes not listed.

IPS Pipe Size	Nominal OD (in)	Pressure Class (psi)	Dimension (in)	Weight (Lbs)
			L	
1" x 3/4"	1.315 x 1.050*	160	4 3/4	0.1
1 1/4" x 1"	1.660 x 1.315*	160	4 3/4	0.1
1 1/2" x 3/4"	1.900 x 1.050*	160	6 3/8	0.2
		200		
1 1/2" x 1"	1.900 x 1.315*	160	6 3/8	0.2
		200		
2" x 1"	2.375 x 1.315*	160	7	0.3
2" x 1 1/4"	2.375 x 1.660*	160	7	0.3
		200		
2" x 1 1/2"	2.375 x 1.900*	160	7	0.3
		200		
3" x 2"	3.500 x 2.375*	100	7	0.7
		160		
		200		
		250		
4" x 2"	4.500 x 2.375*	100	7 1/2	1
		160		
		200		
		250		
4" x 3"	4.500 x 3.500*	100	7	3
		160		
		200		
		250		
6" x 3"	6.625 x 3.500*	100	8	4
		160		
		200		
		250		
6" x 4"	6.625 x 4.500*	100	8	4
		160		
		200		
		250		
8" x 6"	8.625 x 6.625*	100	11 1/2	7
		160		
		200		
		250		

* Meets AWWA

San Francisco	511 Tunnel Avenue, Brisbane, CA 94005	415-467-4630	FAX 415-467-1010
Los Angeles	1304 E. San Bernardino Ave., San Bernardino, CA 92408	909-799-7800	FAX 909-799-5558
Bakersfield	5221 Gilmore Ave., Bakersfield, CA 93308	661-326-7800	FAX 661-326-7805
Reno	675-B Edison Way, Reno, NV 89502	775-856-1888	FAX 775-856-1844

HDPE PE4710
End Cap, IPS Molded
AWWA C901 or C906



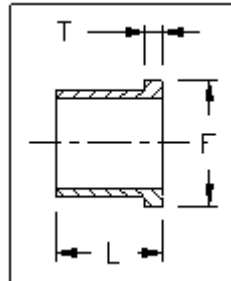
Dimensions and weights are approximate and subject to change. Please call for sizes not listed.

IPS Pipe Size	Nominal OD (in)	Dimension Ratio (DR)	Dimension (in)	Weight (lbs)
			L	
3/4"	1.050	11	2	0.1
1"	1.315	11	2 3/8	0.1
1 1/4"	1.660	11	3 1/4	0.1
1 1/2"	1.900	11	3 5/8	0.3
3"	3.500	17	4	1
		11		
4"	4.500	17	4 1/4	2
		11		
6"	6.625	17	5 1/4	3
		11		
8"	8.625	17	5	5
		11		

Revised 02/23/2017

<i>San Francisco</i>	<i>511 Tunnel Avenue, Brisbane, CA 94005</i>	<i>415-467-4630</i>	<i>FAX 415-467-1010</i>
<i>Los Angeles</i>	<i>1304 E. San Bernardino Ave., San Bernardino, CA 92408</i>	<i>909-799-7800</i>	<i>FAX 909-799-5558</i>
<i>Bakersfield</i>	<i>4039-C Well Tech Way, Bakersfield, CA 93308</i>	<i>661-589-7300</i>	<i>FAX 661-589-7377</i>
<i>Reno</i>	<i>675-B Edison Way, Reno, NV 89502</i>	<i>775-856-1888</i>	<i>FAX 775-856-1844</i>

HDPE PE4710
Flange Adapter, IPS
AWWA C901 or C906



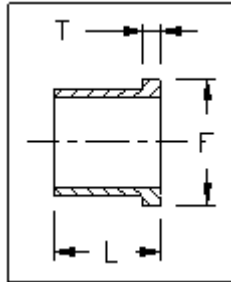
Dimensions and weights are approximate and subject to change. Please call for sizes not listed.

IPS Pipe Size	Nominal OD (in)	Dimension Ratio (DR)	Dimension (in)			Weight (lbs)
			L	F	T	
1"	1.315	17	4	2 ³ / ₈	3 ³ / ₈	0.1
		11				
1 ¹ / ₄ "	1.660	17	4	2 ³ / ₄	3 ³ / ₈	0.2
		11				
1 ¹ / ₂ "	1.900	17	6	3 ¹ / ₈	3 ³ / ₈	0.2
		11				
2"	2.375	17	6	3 ³ / ₄	5 ⁵ / ₁₆	0.5
		11			1 ¹ / ₂	
3"	3.500	17	6	4 ⁵ / ₈	7 ⁷ / ₁₆	1.5
		11			11 ¹¹ / ₁₆	
4"	4.500	17	7	6	9 ⁹ / ₁₆	2
		11			13 ¹³ / ₁₆	
6"	6.625	17	8	8 ¹ / ₈	3 ³ / ₄	4
		11			1 ³ / ₁₆	
8"	8.625	17	11	10 ³ / ₈	1	9
		11			1 ¹ / ₂	
10"	10.750	17	12	12 ³ / ₄	1 ¹ / ₄	11
		11			1 ⁷ / ₈	
12"	12.750	17	12	15 ¹ / ₂	1 ⁷ / ₁₆	17
		11			2 ³ / ₁₆	
14"	14.000	17	12	17	1 ¹ / ₂	26
		11			2 ³ / ₈	

Revised 02/23/2017

San Francisco	511 Tunnel Avenue, Brisbane, CA 94005	415-467-4630	FAX 415-467-1010
Los Angeles	1304 E. San Bernardino Ave., San Bernardino, CA 92408	909-799-7800	FAX 909-799-5558
Bakersfield	4039-C Well Tech Way, Bakersfield, CA 93308	661-589-7300	FAX 661-589-7377
Reno	675-B Edison Way, Reno, NV 89502	775-856-1888	FAX 775-856-1844

HDPE PE4710
Flange Adapter, IPS
AWWA C901 or C906



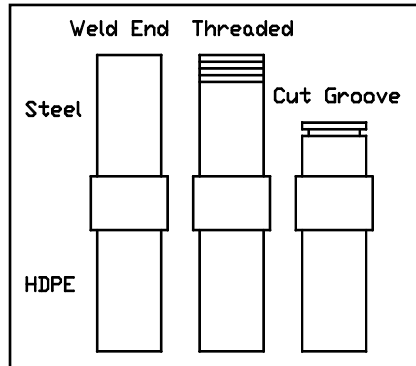
Dimensions and weights are approximate and subject to change. Please call for sizes not listed.

IPS Pipe Size	Nominal OD (in)	Dimension Ratio (DR)	Dimension (in)			Weight (lbs)
			L	F	T	
16"	16.000	17	12	19½	1 ¹³ / ₁₆	33
		11			2¾	
18"	18.000	17	12	20⅞	2	41
		11			3	
20"	20.000	17	12	23¼	2⅞	56
		11				
22"	22.000	17	12	25¼	2⅞	68
		11				
24"	24.000	17	12	27¾	2⅞	83
		11				
26"	26.000	17	14	29¾	2⅞	90
		11				
28"	28.000	17	14	32	3	95
		11				
30"	30.000	17	14	34	3¼	108
		11				
32"	32.000	17	14	36½	3½	124
		11				
34"	34.000	17	14	38⅞	3⅞	108
		11				
36"	36.000	17	14	40½	3⅞	159
		11				210
42"	42.000	17	21	47⅞	3¾	238
		11				306
48"	48.000	17	21	53½	3⅞	316
		11				405
54"	54.000	17	21	59⅞	3¾	370

Revised 02/23/2017

San Francisco	511 Tunnel Avenue, Brisbane, CA 94005	415-467-4630	FAX 415-467-1010
Los Angeles	1304 E. San Bernardino Ave., San Bernardino, CA 92408	909-799-7800	FAX 909-799-5558
Bakersfield	4039-C Well Tech Way, Bakersfield, CA 93308	661-589-7300	FAX 661-589-7377
Reno	675-B Edison Way, Reno, NV 89502	775-856-1888	FAX 775-856-1844

HDPE x Steel
Transitions, IPS
AWWA C901 or C906



Available in:
Carbon Steel
Stainless Steel
External Epoxy Coated Steel

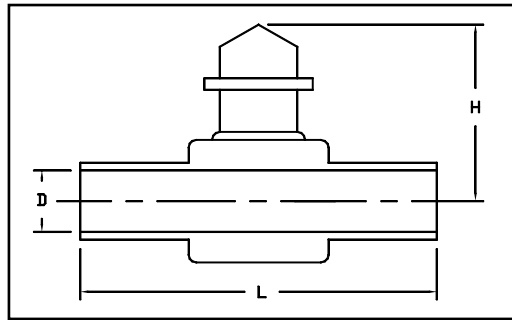
Dimensions and weights are approximate and subject to change. Please call for sizes not listed.

IPS Pipe Size	Nominal OD (in)	Pressure Class	Length (in)				
			HDPE	Weld End	Threaded	Cut Groove	
3/4"	1.050*	160	12	13	4	-	-
1"	1.315*	160	12	13	4	-	-
		200					
1 1/4"	1.660*	160	12	13 1/2	4	-	-
		200					
1 1/2"	1.900*	160	12	13 1/2	4	-	-
		200					
2"	2.375*	160	12	14	4	-	-
		200					
		250					
3"	3.500*	160	12	15	4	4 1/2	4 1/2
		200				-	-
		250				-	-
4"	4.500*	160	12	15	4	4 1/2	4 1/2
		200				-	-
		250				-	-
6"	6.625*	160	17 1/2	18	6	5	7
8"	8.625*	160	24 1/2	23	6	6	6

* Meets AWWA

San Francisco	511 Tunnel Avenue, Brisbane, CA 94005	415-467-4630	FAX 415-467-1010
Los Angeles	1304 E. San Bernardino Ave., San Bernardino, CA 92408	909-799-7800	FAX 909-799-5558
Bakersfield	5221 Gilmore Ave., Bakersfield, CA 93308	661-326-7800	FAX 661-326-7805
Reno	675-B Edison Way, Reno, NV 89502	775-856-1888	FAX 775-856-1844

HDPE
PolyValve, IPS
NSF and UPC

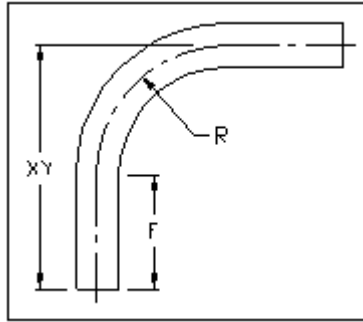


Dimensions and weights are approximate and subject to change. Please call for sizes not listed.

IPS Pipe Size	Nominal OD (in)	Pressure Class (psi)	Dimension (in)			Weight (Lbs)
			D	L	H	
3/4"	1.050	160	0.75	10	3 3/8	1.2
1"	1.315	160	0.90	10	3 3/8	1.2
1 1/4"	1.660	160	0.90	10	3 3/8	1.2
2"	2.375	160	1.85	14 3/4	6 1/2	3.8
3"	3.500	160	2.50	15	8	8
4"	4.500	160	3.62	20	10	19.5
6"	6.625	160	5.22	20	12 1/2	38
8"	8.625	160	6.66	69 1/2	12 1/2	67
12"	12.750	160	9.90	84	21	305

San Francisco	511 Tunnel Avenue, Brisbane, CA 94005	415-467-4630	FAX 415-467-1010
Los Angeles	1304 E. San Bernardino Ave., San Bernardino, CA 92408	909-799-7800	FAX 909-799-5558
Bakersfield	5221 Gilmore Ave., Bakersfield, CA 93308	661-326-7800	FAX 661-326-7805
Reno	675-B Edison Way, Reno, NV 89502	775-856-1888	FAX 775-856-1844

HDPE PE4710
Elbow, 90° IPS Sweep
AWWA C901 and C906



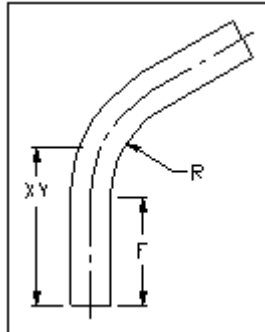
Dimensions and weights are approximate and subject to change. Please call for sizes not listed.

IPS Pipe Size	Nominal OD (in)	Dimension Ratio (DR)	Dimension (in)			Weight (lbs)
			R	F	XY	
2"	2.375	17	7 $\frac{1}{8}$	6	13 $\frac{1}{4}$	0.8
		11				1.2
3"	3.500	17	10 $\frac{1}{2}$	6	16 $\frac{1}{2}$	2.2
		11				3.3
4"	4.500	17	13 $\frac{1}{2}$	6	19 $\frac{1}{2}$	4.3
		11				6.4
6"	6.625	17	19 $\frac{3}{8}$	7	26 $\frac{3}{8}$	13
		11				19
8"	8.625	17	24 $\frac{1}{2}$	10	34 $\frac{1}{2}$	28
		11				41
10"	10.750	17	32 $\frac{1}{4}$	11	43 $\frac{1}{4}$	55
		11				80
12"	12.750	17	38 $\frac{1}{4}$	13	51 $\frac{1}{4}$	90
		11				135
14"	14.000	17	38 $\frac{3}{8}$	13	51 $\frac{3}{8}$	110
		11				165
16"	16.000	17	48	16	64	175
		11				260
18"	18.000	17	54	18	72	250
		11				375
20"	20.000	17	60	20	80	345
		11				510

Revised 02/13/2017

<i>San Francisco</i>	<i>511 Tunnel Avenue, Brisbane, CA 94005</i>	<i>415-467-4630</i>	<i>FAX 415-467-1010</i>
<i>Los Angeles</i>	<i>1304 E. San Bernardino Ave., San Bernardino, CA 92408</i>	<i>909-799-7800</i>	<i>FAX 909-799-5558</i>
<i>Bakersfield</i>	<i>4039-C Well Tech Way, Bakersfield, CA 93308</i>	<i>661-589-7300</i>	<i>FAX 661-589-7377</i>
<i>Reno</i>	<i>675-B Edison Way, Reno, NV 89502</i>	<i>775-856-1888</i>	<i>FAX 775-856-1844</i>

HDPE PE4710
Elbow, 60° IPS Sweep
AWWA C901 and C906



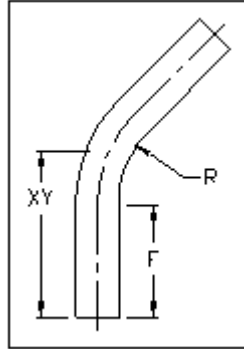
Dimensions and weights are approximate and subject to change. Please call for sizes not listed.

IPS Pipe Size	Nominal OD (in)	Dimension Ratio (DR)	Dimension (in)			Weight (lbs)
			R	F	XY	
2"	2.375	17	7 $\frac{1}{8}$	6	13 $\frac{1}{4}$	0.7
		11				1.1
3"	3.500	17	10 $\frac{1}{2}$	6	16 $\frac{1}{2}$	1.8
		11				2.7
4"	4.500	17	13 $\frac{1}{2}$	6	19 $\frac{1}{2}$	3.4
		11				5
6"	6.625	17	19 $\frac{7}{8}$	7	26 $\frac{7}{8}$	10
		11				15
8"	8.625	17	24 $\frac{1}{2}$	10	34 $\frac{1}{2}$	22
		11				32
10"	10.750	17	32 $\frac{1}{4}$	11	43 $\frac{1}{4}$	40
		11				60
12"	12.750	17	38 $\frac{1}{4}$	13	51 $\frac{1}{4}$	70
		11				100
14"	14.000	17	38 $\frac{7}{8}$	13	51 $\frac{7}{8}$	85
		11				125
16"	16.000	17	48	16	64	135
		11				200
18"	18.000	17	54	18	72	190
		11				285
20"	20.000	17	60	20	80	260
		11				390

Revised 02/13/2017

San Francisco	511 Tunnel Avenue, Brisbane, CA 94005	415-467-4630	FAX 415-467-1010
Los Angeles	1304 E. San Bernardino Ave., San Bernardino, CA 92408	909-799-7800	FAX 909-799-5558
Bakersfield	4039-C Well Tech Way, Bakersfield, CA 93308	661-589-7300	FAX 661-589-7377
Reno	675-B Edison Way, Reno, NV 89502	775-856-1888	FAX 775-856-1844

HDPE PE4710
Elbow, 45° IPS Sweep
AWWA C901 and C906



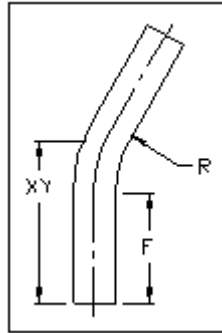
Dimensions and weights are approximate and subject to change. Please call for sizes not listed.

IPS Pipe Size	Nominal OD (in)	Dimension Ratio (DR)	Dimension (in)			Weight (lbs)
			R	F	XY	
2"	2.375	17	7 $\frac{1}{8}$	6	13 $\frac{1}{4}$	0.6
		11				0.9
3"	3.500	17	10 $\frac{1}{2}$	6	16 $\frac{1}{2}$	1.6
		11				2.4
4"	4.500	17	13 $\frac{1}{2}$	6	19 $\frac{1}{2}$	3
		11				4.3
6"	6.625	17	19 $\frac{7}{8}$	7	26 $\frac{7}{8}$	8.3
		11				12.5
8"	8.625	17	24 $\frac{1}{2}$	10	34 $\frac{1}{2}$	19
		11				28
10"	10.750	17	32 $\frac{1}{4}$	11	43 $\frac{1}{4}$	35
		11				52
12"	12.750	17	38 $\frac{1}{4}$	13	51 $\frac{1}{4}$	58
		11				86
14"	14.000	17	38 $\frac{7}{8}$	13	51 $\frac{7}{8}$	70
		11				105
16"	16.000	17	48	16	64	115
		11				170
18"	18.000	17	54	18	72	165
		11				240
20"	20.000	17	60	20	80	225
		11				335

Revised 02/13/2017

San Francisco	511 Tunnel Avenue, Brisbane, CA 94005	415-467-4630	FAX 415-467-1010
Los Angeles	1304 E. San Bernardino Ave., San Bernardino, CA 92408	909-799-7800	FAX 909-799-5558
Bakersfield	4039-C Well Tech Way, Bakersfield, CA 93308	661-589-7300	FAX 661-589-7377
Reno	675-B Edison Way, Reno, NV 89502	775-856-1888	FAX 775-856-1844

HDPE PE4710
Elbow, 30° IPS Sweep
AWWA C901 and C906



Dimensions and weights are approximate and subject to change. Please call for sizes not listed.

IPS Pipe Size	Nominal OD (in)	Dimension Ratio (DR)	Dimension (in)			Weight (lbs)
			R	F	XY	
2"	2.375	17	7 ⁷ / ₈	6	13 ¹ / ₄	0.6
		11				0.9
3"	3.500	17	10 ¹ / ₂	6	16 ¹ / ₂	1.4
		11				2.1
4"	4.500	17	13 ¹ / ₂	6	19 ¹ / ₂	2.5
		11				3.7
6"	6.625	17	19 ⁷ / ₈	7	26 ⁷ / ₈	7
		11				10
8"	8.625	17	24 ¹ / ₂	10	34 ¹ / ₂	16
		11				23
10"	10.750	17	32 ¹ / ₄	11	43 ¹ / ₄	29
		11				43
12"	12.750	17	38 ¹ / ₄	13	51 ¹ / ₄	48
		11				70
14"	14.000	17	38 ⁷ / ₈	13	51 ⁷ / ₈	58
		11				87
16"	16.000	17	48	16	64	93
		11				140
18"	18.000	17	54	18	72	135
		11				200
20"	20.000	17	60	20	80	182
		11				270

Revised 02/13/2017

<i>San Francisco</i>	<i>511 Tunnel Avenue, Brisbane, CA 94005</i>	<i>415-467-4630</i>	<i>FAX 415-467-1010</i>
<i>Los Angeles</i>	<i>1304 E. San Bernardino Ave., San Bernardino, CA 92408</i>	<i>909-799-7800</i>	<i>FAX 909-799-5558</i>
<i>Bakersfield</i>	<i>4039-C Well Tech Way, Bakersfield, CA 93308</i>	<i>661-589-7300</i>	<i>FAX 661-589-7377</i>
<i>Reno</i>	<i>675-B Edison Way, Reno, NV 89502</i>	<i>775-856-1888</i>	<i>FAX 775-856-1844</i>