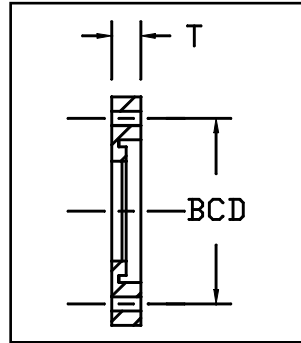


Back-Up Ring, IPS Convolute Ductile Iron
ANSI B16.5, B16.47, B16.1 and AWWA C207



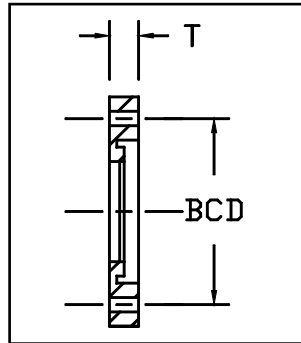
Dimensions and weights are approximate and subject to change. Please call for sizes not listed.

IPS Pipe Size	Nominal OD (in)	Pressure Class (psi)	Dimension (in)		Weight (Lbs)	Bolt	
			BCD	T		Diameter	Number
1"	1.315*	267	3 1/8	9/16	1	1/2	4
1 1/4"	1.660*	267	3 1/2	5/8	2	1/2	4
1 1/2"	1.900*	267	3 7/8	11/16	2	1/2	4
2"	2.375*	160	4 3/4	1/2	1.5	5/8	4
		267		3/4	3		
3"	3.500*	160	6	1/2	2.5	5/8	4
		267		1	4		
4"	4.500*	160	7 1/2	9/16	4	5/8	8
		267		1	6		
6"	6.625*	160	9 1/2	5/8	5	3/4	8
		267		1	7		
8"	8.625*	160	11 3/4	7/8	8	3/4	8
		267		1 1/8	11		
10"	10.750*	160	14 1/4	1	12	7/8	12
		267	14 1/4	1 3/16	16	7/8	12
12"	12.750*	160	17	1 1/4	20	7/8	12
		267	17	1 1/2	23	7/8	12
14"	14.000*	160	18 3/4	1 3/8	30	1	12
		267	18 3/4	1 5/8	37	1	12
16"	16.000*	160	21 1/4	1 11/16	40	1	16
		267	21 1/4	1 7/8	49	1	16
18"	18.000*	160	22 3/4	1 11/16	45	1 1/8	16
		200	22 3/4	1 13/16	48	1 1/8	16
20"	20.000*	160	25	1 13/16	55	1 1/8	20
		200	25	2 1/16	61	1 1/8	20
22"	22.000*	160	27 1/4	2	65	1 1/4	20
		200	27 1/4	2 1/8	72	1 1/4	20

* Meets AWWA

San Francisco	511 Tunnel Avenue, Brisbane, CA 94005	415-467-4630	FAX 415-467-1010
Los Angeles	1304 E. San Bernardino Ave., San Bernardino, CA 92408	909-799-7800	FAX 909-799-5558
Bakersfield	5221 Gilmore Ave., Bakersfield, CA 93308	661-326-7800	FAX 661-326-7805
Reno	675-B Edison Way, Reno, NV 89502	775-856-1888	FAX 775-856-1844

Back-Up Ring, IPS Convuluted Ductile Iron
ANSI B16.5, B16.47, B16.1 and AWWA C207



Dimensions and weights are approximate and subject to change. Please call for sizes not listed.

IPS Pipe Size	Nominal OD (in)	Pressure Class (psi)	Dimension (in)		Weight (Lbs)	Bolt	
			BCD	T		Diameter	Number
24"	24.000*	160	29 1/2	2 1/8	80	1 1/4	20
		200	29 1/2	2 3/16	91	1 1/4	20
26"	26.000*	100	31 3/4	2 3/8	82	1 1/4	24
		160	31 3/4	2 3/8	104	1 1/4	24
		200	31 3/4	2 9/16	109	1 1/4	24
28"	28.000*	100	34	2 1/2	92	1 1/4	28
		160	34	2 5/8	116	1 1/4	28
		200	34	2 1/2	126	1 1/4	28
30"	30.000*	65	36	2 1/16	104	1 1/4	28
		128	36	2 1/2	143	1 1/4	28
		200	36	2 11/16	153	1 1/4	28
32"	32.000*	65	38 1/2	2 1/16	111	1 1/2	28
		128	38 1/2	2 5/8	168	1 1/2	28
		200	38 1/2	2 7/8	175	1 1/2	28
34"	34.000*	100	40 1/2	2 11/16	181	1 1/2	32
		160	40 1/2	2 15/16	191	1 1/2	32
36"	36.000*	50	42 3/4	2 1/16	129	1 1/2	32
		100	42 3/4	2 3/4	196	1 1/2	32
		160	42 3/4	3 3/16	225	1 1/2	32
40"	40.000*	89	47 1/4	3 1/2	265	1 1/2	36
		128	47 1/4	3 1/2	307	1 1/2	36
42"	42.000*	80	49 1/2	3	277	1 1/2	36
		128	49 1/2	3 9/16	319	1 1/2	36
48"	48.000*	64	56	3 1/2	332	1 1/2	44
		100	56	3 13/16	400	1 1/2	44
54"	54.000*	64	62 3/4	3 3/4	464	1 3/4	44
		80	62 3/4	4 1/8	516	1 3/4	44

* Meets AWWA

San Francisco	511 Tunnel Avenue, Brisbane, CA 94005	415-467-4630	FAX 415-467-1010
Los Angeles	1304 E. San Bernardino Ave., San Bernardino, CA 92408	909-799-7800	FAX 909-799-5558
Bakersfield	5221 Gilmore Ave., Bakersfield, CA 93308	661-326-7800	FAX 661-326-7805
Reno	675-B Edison Way, Reno, NV 89502	775-856-1888	FAX 775-856-1844