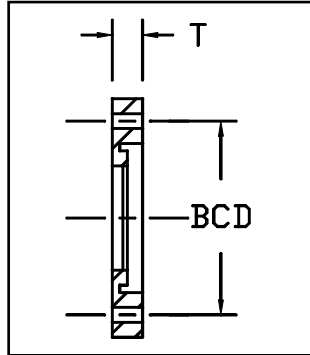


Back-Up Ring, IPS Convolute 316 Stainless Steel
ANSI B16.5, B16.47 and AWWA C207



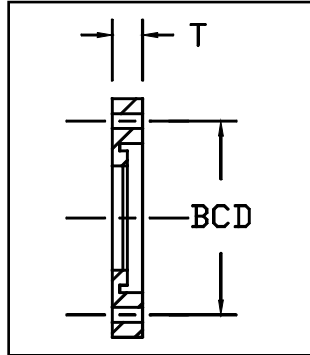
Dimensions and weights are approximate and subject to change. Please call for sizes not listed.

IPS Pipe Size	Nominal OD (in)	Pressure Class (psi)	Dimension (in)		Weight (Lbs)	Bolt	
			BCD	T		Diameter	Number
1"	1.315*	267	3 1/8	9/16	1	1/2	4
1 1/2"	1.900*	267	3 7/8	11/16	2	1/2	4
2"	2.375*	160	4 3/4	3/8	2	5/8	4
		267		3/4	3		
3"	3.500*	128	6	3/8	3	5/8	4
		267		15/16	5		
4"	4.500*	128	7 1/2	1/2	5	5/8	8
		267		15/16	6		
6"	6.625*	128	9 1/2	5/8	6	3/4	8
		267		1	9		
8"	8.625*	128	11 3/4	11/16	9	3/4	8
		267		1 1/8	12		
10"	10.750*	128	14 1/4	7/8	12	7/8	12
		250		1 3/16	18		
12"	12.750*	128	17	1 1/16	21	7/8	12
		160		1 1/4	24		
14"	14.000*	100	18 3/4	1 1/8	25	1	12
		183		1 3/8	40		
16"	16.000*	80	21 1/4	1 1/4	31	1	16
		160		1 7/16	52		

* Meets AWWA

San Francisco	511 Tunnel Avenue, Brisbane, CA 94005	415-467-4630	FAX 415-467-1010
Los Angeles	1304 E. San Bernardino Ave., San Bernardino, CA 92408	909-799-7800	FAX 909-799-5558
Bakersfield	5221 Gilmore Ave., Bakersfield, CA 93308	661-326-7800	FAX 661-326-7805
Reno	675-B Edison Way, Reno, NV 89502	775-856-1888	FAX 775-856-1844

Back-Up Ring, IPS Convolute 316 Stainless Steel
ANSI B16.5, B16.47 and AWWA C207



Dimensions and weights are approximate and subject to change. Please call for sizes not listed.

IPS Pipe Size	Nominal OD (in)	Pressure Class (psi)	Dimension (in)		Weight (Lbs)	Bolt	
			BCD	T		Diameter	Number
18"	18.000*	80	22 3/4	1 5/16	33	1 1/8	16
		160		1 9/16	57		
20"	20.000*	80	25	1 7/16	39	1 1/8	20
		128		1 11/16	69		
22"	22.000*	80	27 1/4	1 1/2	50	1 1/4	20
		128		1 13/16	78		
24"	24.000*	64	29 1/2	1 9/16	65	1 1/4	20
		128		1 7/8	97		
28"	28.000*	80	34	2 5/16	109	1 1/4	28
		160		2 11/16	134		
30"	30.000*	64	36	2 3/16	121	1 1/4	28
		128		2 3/4	174		
36"	36.000*	50	42 3/4	2 5/16	167	1 1/2	32
		100		3	230		
40"	40.000*	80	47 3/4	3 7/16	341	1 1/2	36
42"	42.000*	80	49 1/2	3 1/4	330	1 1/2	36
48"	48.000*	64	56	3 1/2	405	1 1/2	44
54"	54.000*	64	62 3/4	3 7/8	513	1 3/4	44

* Meets AWWA

San Francisco	511 Tunnel Avenue, Brisbane, CA 94005	415-467-4630	FAX 415-467-1010
Los Angeles	1304 E. San Bernardino Ave., San Bernardino, CA 92408	909-799-7800	FAX 909-799-5558
Bakersfield	5221 Gilmore Ave., Bakersfield, CA 93308	661-326-7800	FAX 661-326-7805
Reno	675-B Edison Way, Reno, NV 89502	775-856-1888	FAX 775-856-1844