

# ELECTROFUSION CATALOG



 **PLASSON**<sup>®</sup>  
USA

# PLASSON GROUP

## USA

Plasson USA  
www.plassonusa.com

## Germany

Plasson GmbH  
E-mail: info@plasson.de  
www.plasson.de

## Poland

Plasson Polska Sp.z o.o.  
E-mail: biuro@plasson.pl  
www.plasson.pl

## Australia

Plasson Australia (PTY) Ltd.  
E-mail: info@plasson.com.au  
www.plasson.com.au

## Italy

Plasson Italia  
E-mail: info@plasson.it  
www.plasson.it

## Spain

Plasson Spain  
E-mail: plasson@plasson.es  
www.plasson.es

## France

Plasson France S.A.  
E-mail: commercial@plassonfrance.fr  
www.plasson.fr

## United Kingdom

Plasson UK Ltd.  
E-mail: miron@plassonco.uk  
www.plasson.co.uk

---

**PLASSON PROVIDES A WIDE RANGE OF SOLUTIONS FOR JOINING PE PIPE SYSTEMS.** Plasson's solutions have been used in water and gas systems for more than 40 years in over 80 countries around the world.

Plasson now offers a complete line of Plasson ElectroFusion products that comply with ASTM standards for inch sized PE pipes. The line includes ElectroFusion fittings, tooling and control boxes.

Plasson customers benefit from Plasson's quality products, expertise and worldwide first rate service.

---

# GRUPO PLASSON

## USA

Plasson USA  
www.plassonusa.com  
Email: sales@plassonusa.com

## Alemania

Plasson GmbH  
E-mail: info@plasson.de  
www.plasson.de

## Polonia

Plasson Polska Sp.z o.o.  
E-mail: biuro@plasson.pl  
www.plasson.pl

## Australia

Plasson Australia (PTY) Ltd.  
E-mail: info@plasson.com.au  
www.plasson.com.au

## Italia

Plasson Italia  
E-mail: info@plasson.it  
www.plasson.it

## España

Plasson Spain  
E-mail: plasson@plasson.es  
www.plasson.es

## Francia

Plasson France S.A.  
E-mail: commercial@plassonfrance.fr  
www.plasson.fr

## Reino Unido

Plasson UK Ltd.  
E-mail: miron@plassonco.uk  
www.plasson.co.uk

# TABLE OF CONTENTS

## 5901B, 5901U, 5901D Pages 4-5

IPS Coupling, CTS coupling,  
DIPS coupling  
Enlace Recto



## 5911 Page 6

Reducing Coupling  
Enlace Reductor



## 5904B Page 6

IPS Tee 90°  
IPS Enlace T 90°



## 5947B Page 6-7

IPS Adjustable Elbow  
IPS Codo Ajustable



## 5905B Page 7

IPS Elbow 90°  
IPS Codo 90°



## 5906B Page 7

IPS Elbow 45°  
IPS Codo 45°



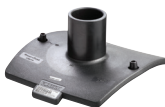
## 5958B, 5958D Page 8

IPS branch Saddle  
DIPS X IPS Branch Saddle  
Collarín de Derivación



## 5958B Page 9

Multi-Size Branch Saddle for  
Medium and Large Pipes  
Collarín de derivación para tubos  
de diámetros grandes y medianos



## 5938B, 5938D Page 10-11

IPS transition saddles (brass)  
DIPS transition saddles (brass)



## 5963B Page 12

IPS Tapping Saddle  
Toma de Servicio



## 5913B Page 13

IPS High Volume Tapping Tee  
Camiseta de tapping alto volumen IPS



## 5963BBP/5963BUP Page 14

IPS Tapping Saddle, Parallel,  
IPS Toma de Servicio, Paralela



## 5963DBP/DUP Page 14-15

DIPS Tapping Saddle, Parallel  
DIPS Toma de Servicio, Paralela



## EF TAPPING TEE WELDED Page 16

Tapa soldada EF Tapping Tee



## 49009999 Page 17

Flex Restraint for pipes 6"-63"  
Dispositivo de sujeción soldado al  
tubo 6"-63"



## 44704001 Page 17

Flex Restraint Tension Strap



## 5758 Page 18

Wastewater saddle 45° wye Inlet  
Ramal 45° de Salida para Aguas  
Residuales



## 5758 Page 18

Wastewater Saddle 90° TEE for PVC  
Ramal de Servicio con Adaptador  
a Tubo PVC



## Tools for Wastewater Saddles Page 18

Herramientas para ramales



## Pages 19-20

Technical Specifications  
Especificaciones Técnicas

## Pages 21-24

Plasson Control Boxes  
Soldadoras



## Pages 25-26

Installation Tools  
Herramientas de instalación



## Pages 27-32

Installation Instructions  
Instrucciones de montaje

## Pages 33

Attestation of Conformance  
Certificación de Conformidad

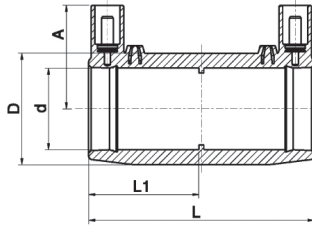
## Pages 34-35

Products available from Plasson USA  
Producto disponible de Plasson USA

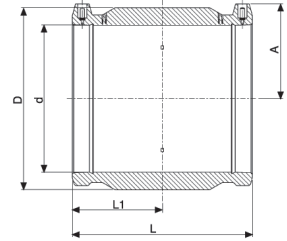
# ELECTROFUSION FITTINGS

## IPS Coupling IPS Enlace Recto

**5901B**



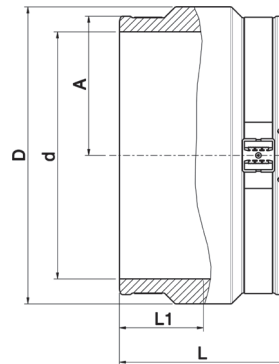
1/2 to 2 inch



3 to 16 inch

Item No.	Size D	L	LI	D	A	W	UC
5901B004005	1/2	2.80	1.36	1.42	1.51	0.13	480
5901B004007	3/4	2.80	1.36	1.42	1.51	0.09	480
5901B004010	1	3.15	1.54	1.77	1.66	0.145	320
5901B004013	1.1/4	3.54	1.71	2.17	1.85	0.20	200
5901B004015	1.1/2	3.94	1.91	2.68	2.09	0.36	132
*5901B004020	*2	4.61	2.24	3.23	2.26	0.55	72
*5901B004030	*3	5.87	2.87	4.65	2.72	1.32	41
*5901B004040	*4	6.46	3.15	5.51	3.19	1.72	23
*5901B004060	*6	7.99	3.94	8.15	4.28	4.09	5
*5901B004080	*8	9.41	4.65	11.0	5.51	10.8	4
*5901B004100	*10	10.8	5.33	13.4	6.37	16.3	1
*5901B003120	*12	11.2	5.51	15.3	7.36	17.6	1
5901B003140	14	11.0	5.51	16.9	7.95	22.9	1
5901B003160	16	11.7	5.83	19.0	8.96	29.2	1

\*FM Available



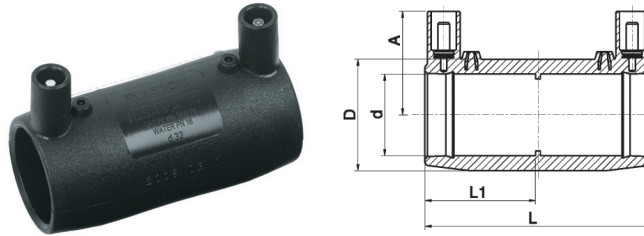
18 inch and up

Item No.	Size D	L	LI	D	A	W	UC
5901B003180	18	12.2	6.10	21.4	10.0	31.3	1
5901B003200	20	14.8	7.40	23.46	11.1	50.9	1
5901B003220	22	14.8	7.40	25.82	12.5	70.5	1
5901B003240	24	16.5	8.23	28.34	14.0	99.2	1
59013003280	28	18.58	9.29	33.58	15.73	139	1
5901B003300	30	19.69	9.84	36.69	16.89	193.5	1

# ELECTROFUSION FITTINGS

## CTS Coupling CTS Enlace Recto

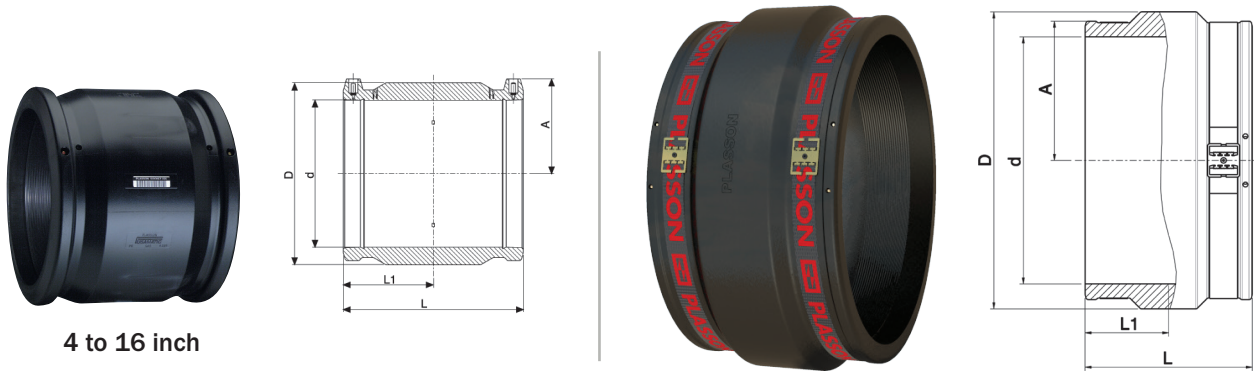
**5901U**



Item No.	Size D	L	LI	D	A	W	UC
5901U004005	1/2	2.80	1.36	1.38	1.50	0.13	480
5901U004007	3/4	2.80	1.36	1.42	1.50	0.10	480
5901U004010	1	3.15	1.54	1.73	1.65	0.16	320
5901U004013	1.1/4	3.54	1.71	2.20	1.85	0.27	200

## DIPS Coupling DIPS Enlace Recto

**5901D**



4 to 16 inch

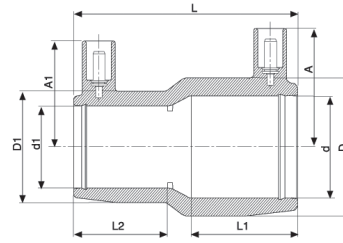
18 inch and up

	Size D	L	LI	D	A	W	UC
5901D004040	4	6.81	3.35	6.14	3.39	2.63	18
5901D004060	6	8.35	4.11	8.78	4.49	5.88	4
5901D004080	8	9.45	4.67	11.0	5.51	9.3	4
5901D004100	10	10.8	5.31	13.5	6.61	14.5	1
5901D004120	12	11	5.43	16.56	7.87	25.58	1
5901D003140	14	11.65	5.7	18.7	8.58	30.85	1
5901D003160	16	12.08	6.02	21.30	10.00	33.06	1
5901D003180	18	14.80	7.40	22.89	11.12	45.00	1
5901D003200	20	14.80	7.40	25.33	12.46	59.50	1
5901D003240	24	18.58	9.29	30.27	14.37	106	1

# ELECTROFUSION FITTINGS

## Reducing Coupling Enlace Reductor

5911



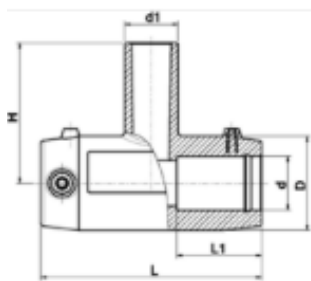
Item No.	Size D x D1	L	A	A1	L1	L2	D	D1	W	UC
5911BU03010005	1" IPS x 1/2" CTS	3.15	1.61	1.40	1.51	1.29	1.77	1.25	0.136	360
5911UU03010005	1" CTS x 1/2" CTS	3.15	1.61	1.61	1.53	1.38	1.77	1.30	0.145	360
5911BU03013013	1 1/4" IPS x 1 1/4" CTS	3.53	1.85	1.85	1.77	1.77	2.18	2.18	0.236	200
5911BB03020013	2" IPS x 1 1/4" IPS	4.64	2.24	1.93	2.27	1.85	3.22	2.20	0.454	96
5911BU03020013	2" IPS x 1 1/4" CTS	4.64	1.74	2.30	2.27	1.73	3.23	2.18	0.626	96
5911BB03020020	2" IPS x 2" CTS	4.72	2.30	2.30	2.29	2.29	3.28	3.28	0.626	72

## IPS Tee 90° IPS Enlace T 90°

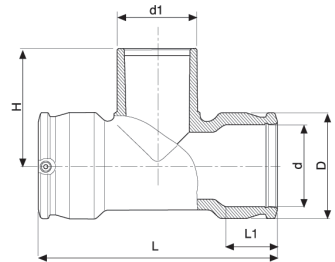
5904B



1 - 2 inch



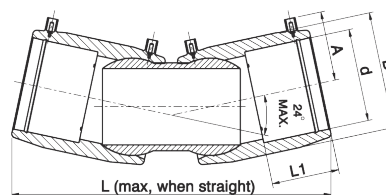
3 inch and up



Item No.	Size Dx D1xD	L	LI	D	H	A	W	UC
5904B003010	1	4.09	1.48	1.75	2.83	1.68	0.18	144
5904B003013	1.1/4	4.76	1.71	2.19	3.31	1.84	0.37	96
5904B003015	1.1/2	5.47	1.91	2.67	3.74	2.04	0.58	56
5904B003020	2	6.54	2.26	3.23	4.37	2.30	0.99	32
5904B003030	3	11.5	2.78	4.41	5.39	2.76	2.40	15
5904B003040	4	12.9	2.74	5.61	6.30	3.37	4.32	8

## IPS Adjustable Elbow - Two Sided IPS Codo Ajustable

5947B

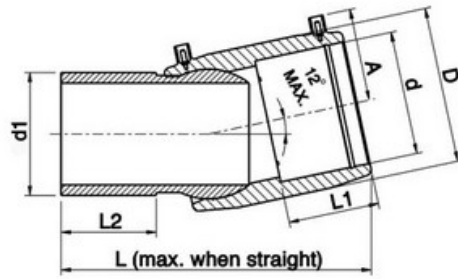


Item No.	Size D	L	LI	D	A	W	UC
5947B003040	4	14.37	3.23	5.51	3.46	4.47	8
5947B003060	6	20.27	4.05	8.78	4.96	18.09	2
5947B003080	8	23.62	4.35	10.98	5.51	30	1
5947B003120	12	25.70	5.35	15.20	7.60	68	1

# ELECTROFUSION FITTINGS

## IPS Adjustable Elbow - One Sided 8-12 IPS

**5947B**



Item No.	Size D	L	LI	D	A	W	UC
5947B0S3080	8	16.73	4.35	10.98	5.51	18.5	1
5947B0S3120	12	20.10	5.35	15.20	7.60	61.7	1

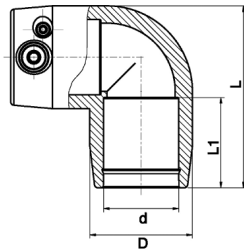
\*Plasson One Sided EF Adjustable Elbow is supplied with a separate full size EF Coupling in the box

## IPS Elbow 90° IPS Codo 90°

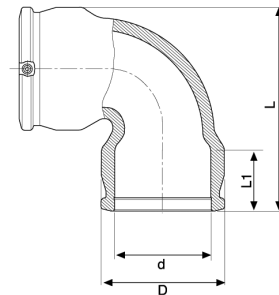
**5905B**



1 - 2 inch



3 inch and up



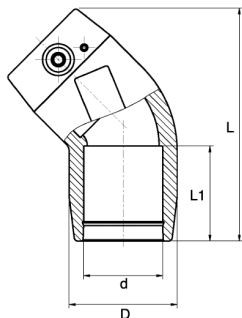
Item No.	Size D	L	LI	D	A	W	UC
5905B003010	1	3.09	1.54	1.75	1.68	0.18	192
5905B003013	1.1/4	3.67	1.71	2.19	1.84	0.31	120
5905B003015	1.1/2	4.31	1.91	2.67	2.04	0.49	72
5905B003020	2	5.20	2.26	3.23	2.04	0.73	40
5905B003030	3	7.95	2.80	4.42	2.30	1.93	16
5905B003040	4	9.35	2.69	5.61	2.76	3.35	9

## IPS Elbow 45° IPS Codo 45°

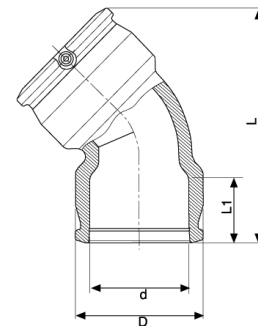
**5906B**



1 - 2 inch



3 inch and up



Item No.	Size D	L	LI	D	A	W	UC
5906B003010	1	3.74	1.54	1.75	1.69	0.18	240
5906B003013	1.1/4	4.25	1.71	2.19	1.84	0.31	160
5906B003015	1.1/2	4.88	1.91	2.67	2.04	0.49	96
5906B003020	2	5.87	2.26	3.23	2.30	0.73	48
5906B003030	3	9.06	2.80	4.42	2.76	1.67	22
5906B003040	4	10.70	3.19	5.61	3.37	2.80	12

# ELECTROFUSION FITTINGS

## IPS Branch Saddle

**5958B**

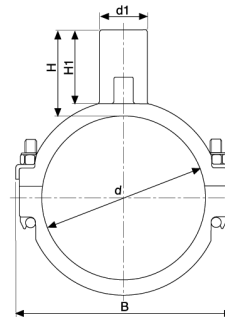
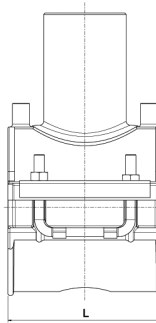
### IPS Collarin de Derivación



On pipe 3"-6"  
with 2" outlet



On 8" and larger pipe  
or 3" outlet



Item No.	Size D x D1	B	H	H1	L	W	UC
5958BB03030020	3 x 2	4.76	3.81	3.31	4.65	1.29	24
5958BB03030030	3 x 3	5.48	4.21	3.49	6.93	1.29	15
5958BB03040020	4 x 2	6.26	3.82	3.30	4.65	1.55	16
5958BB03040030	4 x 3	6.16	4.21	3.49	6.93	2.18	18
5958BB03060020	6 x 2	8.50	3.82	3.29	4.65	1.78	12
5958BB03060030	6 x 3	6.84	4.21	3.49	6.93	2.20	16
5958BB03080020	8 x 2	7.08	4.13	3.31	6.93	1.93	15
5958BB03080030	8 x 3	7.08	4.21	3.48	6.93	2.09	15
5958BB03100020	10 x 2	7.11	4.13	3.31	6.93	2.13	15
5958BB03100030	10 x 3	7.11	4.21	3.49	6.93	2.35	15
5958BB03120020	12 x 2	7.11	4.13	3.31	6.93	2.13	15
5958BB03120030	12 x 3	7.11	4.21	3.49	6.93	2.35	15

## DIPS x IPS Branch Saddle

**5958D**

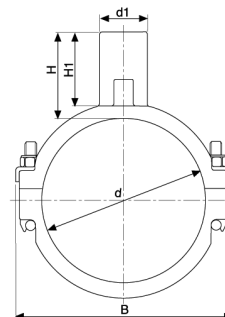
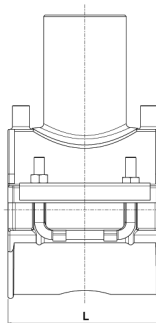
### DIPS x IPS Collarin de Derivación



On pipe 4"-6"  
with 2" outlet



On 8" and larger pipe  
or 3" outlet



Item No.	Size D x D1	B	H	H1	L	W	UC
5958DB03040020	4 x 2	6.26	3.82	3.30	4.65	1.55	16
5958DB03040030	4 x 3	8.50	4.21	3.49	4.65	2.18	18
5958DB03060020	6 x 2	8.50	3.82	3.29	4.65	1.78	12
5958DB03060030	6 x 3	6.96	3.82	3.29	6.93	2.20	15
5958DB03080020	8 x 2	7.08	4.13	3.31	6.93	1.93	15
5958DB03080030	8 x 3	7.08	4.21	3.48	6.93	2.09	15
5958DB03100020	10 x 2	7.11	4.13	3.31	6.93	2.13	15
5958DB03100030	10 x 3	7.11	4.21	3.49	6.93	2.35	15
5958DB03120020	12 x 2	7.11	4.13	3.31	6.93	2.13	15
5958DB03120030	12 x 3	7.11	4.21	3.49	6.93	2.35	15

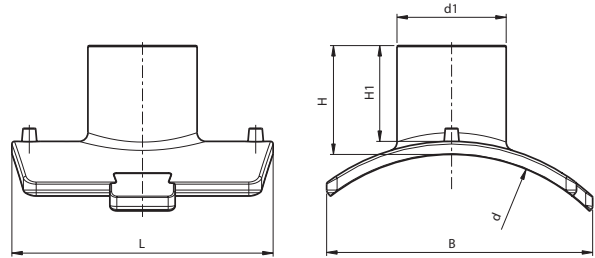
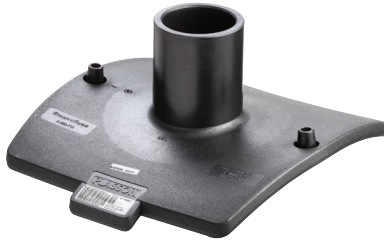


# ELECTROFUSION FITTINGS

## Multi-Size Branch Saddle for Medium and Large Pipes

5958B

Collarín de derivación para tubos de diámetros grandes y medianos



Item No.	Main Pipe Range D IPS	Main Pipe Range D DIPS	Branch Size D1	H	H1	B	L	W	UC
5958BB03160030	10-16	10-14	3 IPS	4.09	4.60	12.00	11.81	3.3	7
5958BB03160040	10-16	10-14	4 IPS	4.13	4.72	12.00	11.81	3.5	7
5958BD03160040	10-16	10-14	4 DIPS	4.33	4.92	12.00	11.81	3.75	7
5958BB03280030	18-28	16-24	3 IPS	4.09	4.60	12.40	11.81	3.3	7
5958BB03280040	18-28	16-24	4 IPS	4.13	4.72	12.40	11.81	3.5	7
5958BD03280040	18-28	16-24	4 DIPS	4.33	4.92	12.40	11.81	3.75	7

\* To be installed only by using Plasson clamping tool for multi-size branch saddle 10-28

\* Debe instalarse únicamente con la herramienta de fijación de Plasson para collarines de derivación de distintos tamaños 10-28

## Installation tools for Plasson multi-size branch saddle

Herramientas de instalación para collarines de derivación de Plasson de distintos tamaños

### 4\_4701\_004

Clamping tool for Plasson multi-size branch saddle 10-28 inch - Complete Kit - Suitcase with belts, ratchets and rounding head; incl. splittable plates 3IPS"/4IPS"/4"DIPS

Presilla de sujeción para collarines 10-28 inch - Juego completo



### 4\_4702\_002

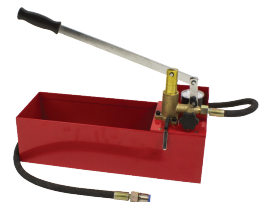
Core cutter kit for PLASSON-Saddle outlet 3"IPS, 4"IPS, 4" DIPS (complete with suitcase, pilot drill, SDS-plus and SDS-Max adapter, chuck adapter)

Juego de punzones para collarines de Plasson 3 IPS / 4 IPS / 4 DIPS



### 4\_4701\_005

Pressure test pump with adapter for PLASSON-Saddle



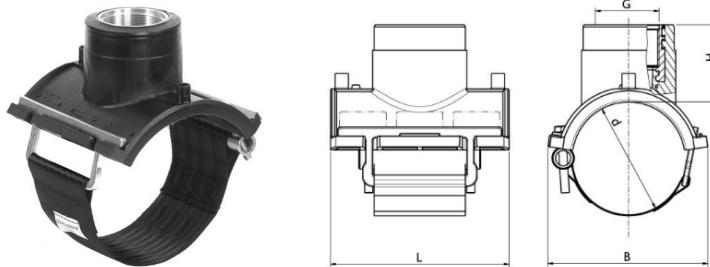
### 1\_4701\_040

1/2" Adapter for test tube on Plasson Multi-Size Branch Saddles (included with Pressure Test Pump)

# ELECTROFUSION FITTINGS

## IPS Transition Saddles (Brass)

5938B

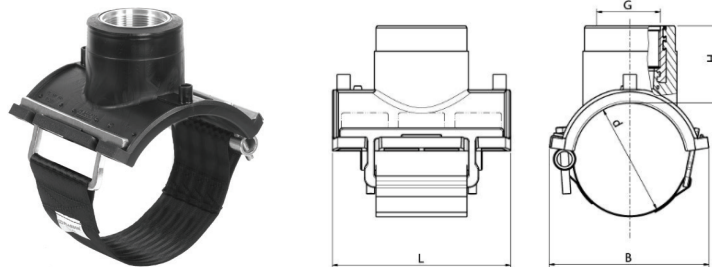


Item No.	Size D X RP	B	L	H	W	UC
5938B00302045	2"IPS X 1"NPT	3.93	4.65	1.15	1.41	-
5938B00302060	2"IPS X 1"CORP	3.93	4.65	1.15	1.46	-
5938B00303055	3"IPS X 2"NPT	5.38	6.93	1.84	2.31	-
5938B00303070	3"IPS X 2"CORP	5.38	6.93	1.84	2.55	-
5938B00304045	4"IPS X 1"NPT	6.15	6.93	1.65	2.06	-
5938B00304060	4"IPS X 1"CORP	6.15	6.93	1.65	2.08	-
5938B00304055	4"IPS X 2"NPT	6.15	6.93	1.84	2.33	-
5938B00304070	4"IPS X 2"CORP	6.15	6.93	1.84	2.57	-
5938B00306045	6"IPS X 1"NPT	6.84	6.93	1.65	2.06	-
5938B00306060	6"IPS X 1"CORP	6.84	6.93	1.65	2.09	-
5938B00306055	6"IPS X 2"NPT	6.84	6.93	1.84	2.36	-
5938B00306070	6"IPS X 2"CORP	6.84	6.93	1.84	2.60	-
5938B00308045	8"IPS X 1"NPT	7.08	6.93	1.65	2.07	-
5938B00308060	8"IPS X 1"CORP	7.08	6.93	1.65	2.11	-
5938B00308055	8"IPS X 2"NPT	7.08	6.93	1.84	2.40	-
5938B00308070	8"IPS X 2"CORP	7.08	6.93	1.84	2.61	-
5938B00310045	10"IPS X 1"NPT	7.1	6.93	1.65	2.08	-
5938B00310060	10"IPS X 1"CORP	7.1	6.93	1.65	2.12	-
5938B00310055	10"IPS X 2"NPT	7.1	6.93	1.84	2.45	-
5938B00310070	10"IPS X 2"CORP	7.1	6.93	1.84	2.66	-
5938B01312045	12"IPS X 1"NPT	7.67	6.93	1.65	2.09	-
5938B01312060	12"IPS X 1"CORP	7.67	6.93	1.84	2.09	-
5938B01312055	12"IPS X 2"NPT	7.67	6.93	1.84	2.45	-
5938B01312060	12"IPS X 2"CORP	7.67	6.93	1.84	2.45	-

# ELECTROFUSION FITTINGS

## DIPS Transition Saddles (Brass)

5938D



Item No.	Size D X RP	B	L	H	W	UC
5938D00304045	4"DIPS X 1"NPT	6.5	6.93	1.65	2.07	-
5938D00304060	4"DIPS X 1"CORP	6.5	6.93	1.65	2.09	-
5938D00304055	4"DIPS X 2"NPT	6.5	6.93	1.84	2.35	-
5938D00304070	4"DIPS X 2"CORP	6.5	6.93	1.84	2.60	-
5938D00306045	6"DIPS X 1"NPT	6.96	6.93	1.65	2.06	-
5938D00306060	6"DIPS X 1"CORP	6.96	6.93	1.65	2.1	-
5938D00306055	6"DIPS X 2"NPT	6.96	6.93	1.84	2.37	-
5938D00306070	6"DIPS X 2"CORP	6.96	6.93	1.84	2.60	-
5938D00308045	8"DIPS X 1"NPT	7.08	6.93	1.65	2.07	-
5938D00308060	8"DIPS X 1"CORP	7.08	6.93	1.65	2.11	-
5938D00308055	8"DIPS X 2"NPT	7.08	6.93	1.84	2.42	-
5938D00308070	8"DIPS X 2"CORP	7.08	6.93	1.84	2.65	-
5938D00310045	10"DIPS X 1"NPT	7.1	6.93	1.65	2.09	-
5938D00310060	10"DIPS X 1"CORP	7.1	6.93	1.65	2.13	-
5938D00310055	10"DIPS X 2"NPT	7.1	6.93	1.84	2.46	-
5938D00310070	10"DIPS X 2"CORP	7.1	6.93	1.84	2.67	-
5938D01312045	12"DIPS X 1"NPT	7.67	6.93	1.65	2.09	-
5938D01312060	12"DIPS X 1"CORP	7.67	6.93	1.84	2.09	-
5938D01312055	12"DIPS X 2"NPT	7.67	6.93	1.84	2.46	-
5938D01312070	12"DIPS X 2"CORP	7.67	6.93	1.84	2.46	-

# ELECTROFUSION FITTINGS

## IPS/CTS Tapping Tee

5963B

### Toma de Servicio



1.1/4 - 2 inch

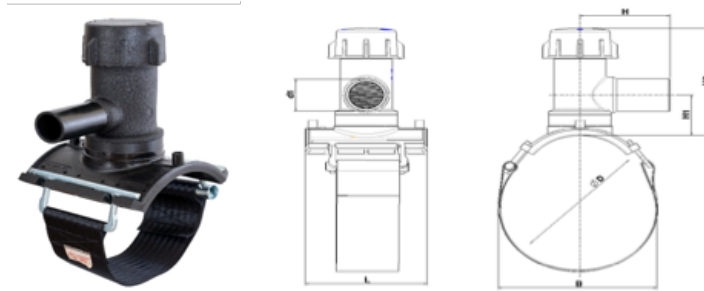
3 - 6 inch

8 inch

Item No.	Size D x D1	Cutter Diameter	Hex Key	H	B	H1	H2	L	W	UC
5963BU03013005	1.1/4 IPS x 1/2 CTS	0.8"	12mm	3.74	2.54	0.27	3.69	3.94	0.61	52
5963BB03013005	1.1/4 IPS x 1/2 IPS	0.8"	12mm	3.74	2.54	0.31	3.69	3.94	0.61	52
5963BU03013007	1.1/4 IPS x 3/4 CTS	0.8"	12mm	3.74	2.54	0.39	3.69	3.94	0.61	52
5963BB03013007	1.1/4 IPS x 3/4 IPS	0.8"	12mm	3.74	2.54	0.39	3.69	3.94	0.61	52
5963BU03013010	1.1/4 IPS x 1 CTS	0.8"	12mm	3.74	2.54	0.39	3.69	3.94	0.61	52
5963BB03013010	1.1/4 IPS x 1 IPS	0.8"	12mm	3.74	2.54	0.47	3.69	3.94	0.61	52
5963BU03015005	1.1/2 IPS x 1/2 CTS	0.8"	12mm	3.74	2.92	0.27	3.86	3.94	0.65	40
5963BB03015005	1.1/2 IPS x 1/2 IPS	0.8"	12mm	3.74	2.92	0.27	3.86	3.94	0.65	40
5963BU03015007	1.1/2 IPS x 3/4 CTS	0.8"	12mm	3.74	2.92	0.27	3.86	3.94	0.65	40
5963BB03015007	1.1/2 IPS x 3/4 IPS	0.8"	12mm	3.74	2.92	0.35	3.86	3.94	0.65	40
5963BU03015010	1.1/2 IPS x 1 CTS	0.8"	12mm	3.74	2.92	0.39	3.86	3.94	0.65	40
5963BB03015010	1.1/2 IPS x 1 IPS	0.8"	12mm	3.74	2.92	0.45	3.86	3.94	0.65	40
5963BU03020005	2 IPS x 1/2 CTS	0.8"	12mm	3.74	3.50	0.25	3.86	4.65	0.79	24
5963BB03020005	2 IPS x 1/2 IPS	0.8"	12mm	3.74	3.50	0.29	3.86	4.65	0.79	24
5963BU03020007	2 IPS x 3/4 CTS	0.8"	12mm	3.74	3.50	0.33	3.86	4.65	0.79	24
5963BB03020007	2 IPS x 3/4 IPS	0.8"	12mm	3.74	3.50	0.37	3.86	4.65	0.79	24
5963BU03020010	2 IPS x 1 CTS	0.8"	12mm	3.74	3.50	0.39	3.86	4.65	0.79	24
5963BB03020010	2 IPS x 1 IPS	0.8"	12mm	3.74	3.50	0.49	3.86	4.65	0.79	24
5963BU03020020	2 IPS x 2 IPS	0.8"	12mm	4.72	4.05	2.56	6.97	4.65	2.34	16
5963BB03020020	2 IPS x 2 IPS	0.8"	12mm	4.72	4.05	2.56	6.97	4.65	2.34	16
5963BU03030005	3 IPS x 1/2 CTS	1.2"	12mm	3.44	4.76	2.56	6.97	4.65	2.50	14
5963BB03030005	3 IPS x 1/2 IPS	1.2"	12mm	3.35	4.76	2.56	6.97	4.65	2.50	14
5963BU03030007	3 IPS x 3/4 CTS	1.2"	12mm	3.39	4.76	2.56	6.97	4.65	2.50	14
5963BB03030007	3 IPS x 3/4 IPS	1.2"	12mm	3.39	4.76	2.56	6.97	4.65	2.50	14
5963BU03030010	3 IPS x 1 CTS	1.2"	12mm	4.13	4.76	2.56	6.97	4.65	2.50	14
5963BB03030010	3 IPS x 1 IPS	1.2"	12mm	4.13	4.76	2.56	6.97	4.65	2.50	14
5963BU03030013	3 IPS x 1.1/4 IPS	1.2"	12mm	4.33	4.76	2.56	6.97	4.65	2.65	14
5963BB03030013	3 IPS x 1.1/4 IPS	1.2"	12mm	4.33	4.76	2.56	6.97	4.65	2.65	14
5963BU03030015	3 IPS x 1.1/2 IPS	1.2"	12mm	4.49	4.76	2.56	6.97	4.65	2.65	14
5963BB03030015	3 IPS x 1.1/2 IPS	1.2"	12mm	4.49	4.76	2.56	6.97	4.65	2.65	14
5963BU03040005	4 IPS x 1/2 CTS	1.2"	12mm	3.44	6.26	2.56	6.97	4.65	2.65	12
5963BB03040005	4 IPS x 1/2 IPS	1.2"	12mm	3.35	6.26	2.56	6.97	4.65	2.65	12
5963BU03040007	4 IPS x 3/4 CTS	1.2"	12mm	3.39	6.26	2.56	6.97	4.65	2.65	12
5963BB03040007	4 IPS x 3/4 IPS	1.2"	12mm	3.39	6.26	2.56	6.97	4.65	2.65	12
5963BU03040010	4 IPS x 1 CTS	1.2"	12mm	4.13	6.26	2.56	6.97	4.65	2.65	12
5963BB03040010	4 IPS x 1 IPS	1.2"	12mm	4.13	6.26	2.56	6.97	4.65	2.65	12
5963BU03040013	4 IPS x 1.1/4 IPS	1.2"	12mm	4.33	6.26	2.56	6.97	4.65	2.77	12
5963BB03040013	4 IPS x 1.1/4 IPS	1.2"	12mm	4.33	6.26	2.56	6.97	4.65	2.77	12
5963BU03040015	4 IPS x 1.1/2 IPS	1.2"	12mm	4.49	6.26	2.56	6.97	4.65	2.77	12
5963BB03040015	4 IPS x 1.1/2 IPS	1.2"	12mm	4.49	6.26	2.56	6.97	4.65	2.77	12
5963BU03060005	6 IPS x 1/2 CTS	1.2"	12mm	3.44	8.50	2.56	6.97	4.65	3.08	10
5963BB03060005	6 IPS x 1/2 IPS	1.2"	12mm	3.35	8.50	2.56	6.97	4.65	3.08	10
5963BU03060007	6 IPS x 3/4 CTS	1.2"	12mm	3.39	8.50	2.56	6.97	4.65	3.08	10
5963BB03060007	6 IPS x 3/4 IPS	1.2"	12mm	3.39	8.50	2.56	6.97	4.65	3.08	10
5963BU03060010	6 IPS x 1 CTS	1.2"	12mm	4.13	8.50	2.56	6.97	4.65	3.08	10
5963BB03060010	6 IPS x 1 IPS	1.2"	12mm	4.13	8.50	2.56	6.97	4.65	3.08	10
5963BU03060013	6 IPS x 1.1/4 IPS	1.2"	12mm	4.33	8.50	2.56	6.97	4.65	3.22	10
5963BB03060013	6 IPS x 1.1/4 IPS	1.2"	12mm	4.33	8.50	2.56	6.97	4.65	3.22	10
5963BU03060015	6 IPS x 1.1/2 IPS	1.2"	12mm	4.49	8.50	2.56	6.97	4.65	3.22	10
5963BB03060015	6 IPS x 1.1/2 IPS	1.2"	12mm	4.49	8.50	2.56	6.97	4.65	3.22	10
5963BU03080005	8 IPS x 1/2 CTS	1.2"	12mm	3.44	7.08	2.56	6.97	6.93	3.17	10
5963BB03080005	8 IPS x 1/2 IPS	1.2"	12mm	3.35	7.08	2.56	6.97	6.93	3.17	10
5963BU03080007	8 IPS x 3/4 CTS	1.2"	12mm	3.39	7.08	2.56	6.97	6.93	3.17	10
5963BB03080007	8 IPS x 3/4 IPS	1.2"	12mm	3.39	7.08	2.56	6.97	6.93	3.17	10
5963BU03080010	8 IPS x 1 CTS	1.2"	12mm	4.13	7.08	2.56	6.97	6.93	3.17	10
5963BB03080010	8 IPS x 1 IPS	1.2"	12mm	4.13	7.08	2.56	6.97	6.93	3.17	10
5963BU03080013	8 IPS x 1.1/4 IPS	1.2"	12mm	4.33	7.08	2.56	6.97	6.93	3.30	10
5963BB03080013	8 IPS x 1.1/4 IPS	1.2"	12mm	4.33	7.08	2.56	6.97	6.93	3.30	10
5963BU03080015	8 IPS x 1.1/2 IPS	1.2"	12mm	4.49	7.08	2.56	6.97	6.93	3.30	10
5963BB03080015	8 IPS x 1.1/2 IPS	1.2"	12mm	4.49	7.08	2.56	6.97	6.93	3.30	10

# ELECTROFUSION FITTINGS

## EF HIGH VOLUME TAPPING TEE 1 1/4" & 2" IPS OUTLET w/1.85" CUTTER



High Volume Tapping  
Tee – 5913

Item No.	Size D x D1	Cutter Diameter	Hex Key	H	B	H1	H2	L	W	UC
5913BB03030013	3 IPS x 1.1/4 IPS	1.85"	5/8"	5.2	4.8	2.8	7.6	6.9	4.4	-
5913BB03030020	3 IPS x 2 IPS	1.85"	5/8"	5.2	4.8	2.8	7.6	6.9	4.5	-
5913BB03040013	4 IPS x 1.1/4 IPS	1.85"	5/8"	5.2	6.3	2.8	7.6	6.9	4.4	-
5913BB03040020	4 IPS x 2 IPS	1.85"	5/8"	5.2	6.3	2.8	7.6	6.9	4.5	-
5913BB03060013	6 IPS x 1.1/4 IPS	1.85"	5/8"	5.2	8.5	2.8	7.6	6.9	4.4	-
5913BB03060020	6 IPS x 2 IPS	1.85"	5/8"	5.2	8.5	2.8	7.6	6.9	4.5	-
5913BB03080013	8 IPS x 1.1/4 IPS	1.85"	5/8"	5.2	7.3	2.8	7.6	6.9	4.4	-
5913BB03080020	8 IPS x 2 IPS	1.85"	5/8"	5.2	7.3	2.8	7.6	6.9	4.5	-
5913BB03100013	10 IPS x 1.1/4 IPS	1.85"	5/8"	5.2	7.3	2.8	7.6	6.9	4.4	-
5913BB03100020	10 IPS x 2 IPS	1.85"	5/8"	5.2	7.3	2.8	7.6	6.9	4.5	-
5913BB03120013	12 IPS x 1.1/4 IPS	1.85"	5/8"	5.2	7.3	2.8	7.6	6.9	4.4	-
5913BB03120020	12 IPS x 2 IPS	1.85"	5/8"	5.2	7.3	2.8	7.6	6.9	4.5	-

# ELECTROFUSION FITTINGS

## IPS Tapping Saddle, Parallel

5963BBP/5963BUP

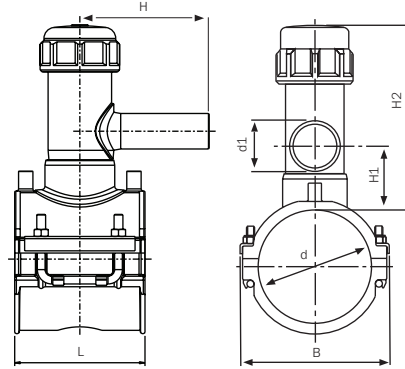
Toma de Servicio, Paralela



3 - 6 inch



8 inch



Item No.	Size D x D1	H	B	H1	H2	L	W	UC
5963BUP3030005	3 IPS x 1/2 CTS	3.44	4.76	2.56	6.97	4.65	2.50	14
5963BBP3030005	3 IPS x 1/2 IPS	3.35	4.76	2.56	6.97	4.65	2.50	14
5963BUP3030007	3 IPS x 3/4 CTS	3.39	4.76	2.56	6.97	4.65	2.50	14
5963BBP3030007	3 IPS x 3/4 IPS	3.39	4.76	2.56	6.97	4.65	2.50	14
5963BUP3030010	3 IPS x 1 CTS	4.13	4.76	2.56	6.97	4.65	2.50	14
5963BBP3030010	3 IPS x 1 IPS	4.13	4.76	2.56	6.97	4.65	2.50	14
5963BBP3030013	3 IPS x 1.1/4 IPS	4.33	4.76	2.56	6.97	4.65	2.65	14
5963BBP3030015	3 IPS x 1.1/2 IPS	4.49	4.76	2.56	6.97	4.65	2.65	14
5963BBP3030020	3 IPS x 2 IPS	4.72	4.76	2.56	6.97	4.65	2.65	14
5963BUP3040005	4 IPS x 1/2 CTS	3.44	6.26	2.56	6.97	4.65	2.65	12
5963BBP3040005	4 IPS x 1/2 IPS	3.35	6.26	2.56	6.97	4.65	2.65	12
5963BUP3040007	4 IPS x 3/4 CTS	3.39	6.26	2.56	6.97	4.65	2.65	12
5963BBP3040007	4 IPS x 3/4 IPS	3.39	6.26	2.56	6.97	4.65	2.65	12
5963BUP3040010	4 IPS x 1 CTS	4.13	6.26	2.56	6.97	4.65	2.65	12
5963BBP3040010	4 IPS x 1 IPS	4.13	6.26	2.56	6.97	4.65	2.65	12
5963BBP3040013	4 IPS x 1.1/4 IPS	4.33	6.26	2.56	6.97	4.65	2.77	12
5963BBP3040015	4 IPS x 1.1/2 IPS	4.49	6.26	2.56	6.97	4.65	2.77	12
5963BBP3040020	4 IPS x 2 IPS	4.72	6.26	2.56	6.97	4.65	2.77	12
5963BUP3060005	6 IPS x 1/2 CTS	3.44	8.50	2.56	6.97	4.65	3.08	10
5963BBP3060005	6 IPS x 1/2 IPS	3.35	8.50	2.56	6.97	4.65	3.08	10
5963BUP3060007	6 IPS x 3/4 CTS	3.39	8.50	2.56	6.97	4.65	3.08	10
5963BBP3060007	6 IPS x 3/4 IPS	3.39	8.50	2.56	6.97	4.65	3.08	10
5963BUP3060010	6 IPS x 1 CTS	4.13	8.50	2.56	6.97	4.65	3.08	10
5963BBP3060010	6 IPS x 1 IPS	4.13	8.50	2.56	6.97	4.65	3.08	10
5963BBP3060013	6 IPS x 1.1/4 IPS	4.33	8.50	2.56	6.97	4.65	3.22	10
5963BBP3060015	6 IPS x 1.1/2 IPS	4.49	8.50	2.56	6.97	4.65	3.22	10
5963BBP3060020	6 IPS x 2 IPS	4.72	8.50	2.56	6.97	4.65	3.22	10
5963BUP3080005	8 IPS x 1/2 CTS	3.44	7.08	2.56	6.97	6.93	3.17	10
5963BBP3080005	8 IPS x 1/2 IPS	3.35	7.08	2.56	6.97	6.93	3.17	10
5963BUP3080007	8 IPS x 3/4 CTS	3.39	7.08	2.56	6.97	6.93	3.17	10
5963BBP3080007	8 IPS x 3/4 IPS	3.39	7.08	2.56	6.97	6.93	3.17	10
5963BUP3080010	8 IPS x 1 CTS	4.13	7.08	2.56	6.97	6.93	3.17	10
5963BBP3080010	8 IPS x 1 IPS	4.13	7.08	2.56	6.97	6.93	3.17	10
5963BBP3080013	8 IPS x 1.1/4 IPS	4.33	7.08	2.56	6.97	6.93	3.30	10
5963BBP3080015	8 IPS x 1.1/2 IPS	4.49	7.08	2.56	6.97	6.93	3.30	10
5963BBP3080020	8 IPS x 2 IPS	4.72	7.08	2.56	6.97	6.93	3.30	10

# ELECTROFUSION FITTINGS

## DIPS Tapping Saddle, Parallel

5963DBP/5963DUP

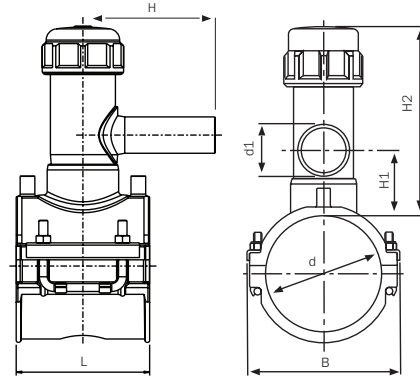
Toma de Servicio, Paralela



4 - 6 inch



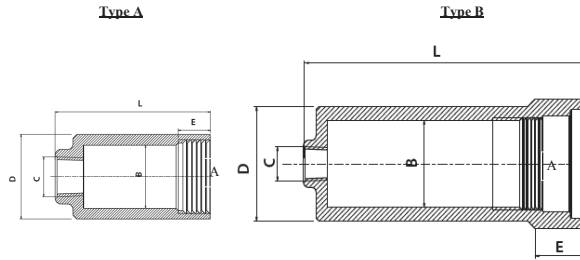
8 inch



Item No.	Size D x D1	H	B	H1	H2	L	W	UC
5963DUP3040005	4 DIPS x 1/2 CTS	3.35	6.26	2.56	6.97	4.65	2.65	12
5963DBP3040005	4 DIPS x 1/2 IPS	3.35	6.26	2.56	6.97	4.65	2.65	12
5963DUP3040007	4 DIPS x 3/4 CTS	3.39	6.26	2.56	6.97	4.65	2.65	12
5963DBP3040007	4 DIPS x 3/4 IPS	3.39	6.26	2.56	6.97	4.65	2.65	12
5963DUP3040010	4 DIPS x 1 CTS	4.13	6.26	2.56	6.97	4.65	2.65	12
5963DBP3040010	4 DIPS x 1 IPS	4.13	6.26	2.56	6.97	4.65	2.65	12
5963DBP3040013	4 DIPS x 1.1/4 IPS	4.33	6.26	2.56	6.97	4.65	2.77	12
5963DBP3040015	4 DIPS x 1.1/2 IPS	4.49	6.26	2.56	6.97	4.65	2.77	12
5963DBP3040020	4 DIPS x 2 IPS	4.72	6.26	2.56	6.97	4.65	2.77	12
5963DUP3060005	6 DIPS x 1/2 CTS	3.35	8.50	2.56	6.97	4.65	3.08	10
5963DBP3060005	6 DIPS x 1/2 IPS	3.35	8.50	2.56	6.97	4.65	3.08	10
5963DUP3060007	6 DIPS x 3/4 CTS	3.39	8.50	2.56	6.97	4.65	3.08	10
5963DBP3060007	6 DIPS x 3/4 IPS	3.39	8.50	2.56	6.97	4.65	3.08	10
5963DUP3060010	6 DIPS x 1 CTS	4.13	8.50	2.56	6.97	4.65	3.08	10
5963DBP3060010	6 DIPS x 1 IPS	4.13	8.50	2.56	6.97	4.65	3.08	10
5963DBP3060013	6 DIPS x 1.1/4 IPS	4.33	8.50	2.56	6.97	4.65	3.22	10
5963DBP3060015	6 DIPS x 1.1/2 IPS	4.49	8.50	2.56	6.97	4.65	3.22	10
5963DBP3060020	6 DIPS x 2 IPS	4.72	8.50	2.56	6.97	4.65	3.22	10
5963DUP3080005	8 DIPS x 1/2 CTS	3.35	7.08	2.56	6.97	6.93	3.17	10
5963DBP3080005	8 DIPS x 1/2 IPS	3.35	7.08	2.56	6.97	6.93	3.17	10
5963DUP3080007	8 DIPS x 3/4 CTS	3.39	7.08	2.56	6.97	6.93	3.17	10
5963DBP3080007	8 DIPS x 3/4 IPS	3.39	7.08	2.56	6.97	6.93	3.17	10
5963DUP3080010	8 DIPS x 1 CTS	4.13	7.08	2.56	6.97	6.93	3.17	10
5963DBP3080010	8 DIPS x 1 IPS	4.13	7.08	2.56	6.97	6.93	3.17	10
5963DBP3080013	8 DIPS x 1.1/4 IPS	4.33	7.08	2.56	6.97	6.93	3.30	10
5963DBP3080015	8 DIPS x 1.1/2 IPS	4.49	7.08	2.56	6.97	6.93	3.30	10
5963DBP3080020	8 DIPS x 2 IPS	4.72	7.08	2.56	6.97	6.93	3.30	10

# ELECTROFUSION FITTINGS

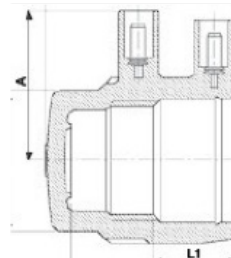
## EF TT Test Cap



Item No.	Type	Fits Plasson tapping saddles (main pipe size)	C Thread	A Special Buttress thread	B in. (mm)	D in. (mm)	E in. (mm)	L in. (mm)
29601001	A	1.1/4" - 2"	1/2" NPT	10 TPI	1.34 (34)	1.77 (45)	0.67 (17)	3.50 (89)
29601002	B	3" - 8"	1/2" NPT	10 TPI	2.13 (54)	3.03 (77)	1.23 (33)	7.16 (182)

## EF Welded Cap for Tapping Saddle Tapin Soldable para toma de servicio

**498304**



Product Code	Type	Size	D	A	H	L	L1		
498304057	Type A	57	74	59	74	63	36	157	128
49009999	1.57"	7.95"	2.56"	0.66	60	0.66	0.66	0.66	
498304050	Type B	S0	62	54	73	66	30	111	192

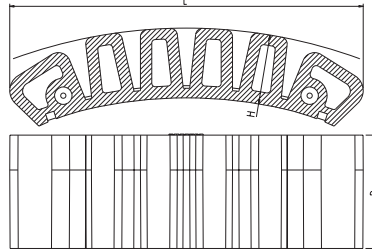


# ELECTROFUSION FITTINGS

## Flex Restraint for pipes 6"- 63"

49009999

Dispositivo de sujeción soldado al tubo 6"-63"



Item No.	H	L	B	W	UC
49009999	1.57"	7.95"	2.56"	0.66	60

Axial Load Restraint Capacity = 7,000 lbf

## Flex Restraint Tension Strap

4\_4704\_001



Item No.	Dimension Range	Product Dimensions	Product Weight	Packaging Type
4-4704-001	6" - 30"	Strap: 118" x 2"	4 lbs	Suitcase

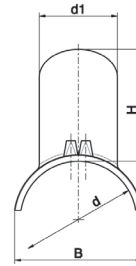
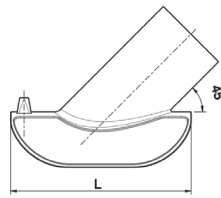
## Additional Information

The strap features a tension force indicator (TFI) which helps to apply proper tensioning.

# WASTEWATER SYSTEM

## IPS and DIPS Wastewater Saddle 45° Wye Inlet Ramal 45° de Salida para Aguas Residuales

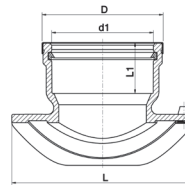
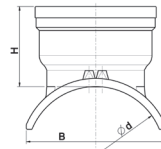
5758



Item No.	Size D x D1	B	H	L	W	UC
5758B0A4070110	6 IPS - 7 IPS x 110 MM	7.22	5.70	10.0	1.45	10
5758D0A4120110	8 IPS - 12 DIPS x 110 MM	8.70	6.21	10.0	1.45	10

## IPS and DIPS Wastewater Saddle Tee 90° for PVC Ramal de Servicio con Adaptador a Tubo PVC

5758



Item No.	Size D x D1	B	H	L	L1	D	W	UC
5758BPV4080060	8 IPS x 6 PSM	8.19	4.92	11.4	3.15	7.48	3.00	6
5758BPV4100060	8 DIPS - 10 IPS x 6 PSM	8.85	4.92	3.15	3.15	7.48	3.00	6
5758BPV4140060	10 DIPS - 14 IPS x 6 PSM	9.72	4.92	11.4	3.15	7.48	3.00	6
5758BPV4220060	14 DIPS - 22 IPS x 6 PSM	10.3	4.92	3.15	3.15	7.48	3.00	6

NOTE: Special drilling and clamping tools required. Please consult your Plasson / IPF representative.  
Se requieren herramientas especiales de perforación y sujeción. Consulte a su representante de Plasson / IPF.  
PSM dimensions to ASTM D-3034.  
PSM dimensiones para ASTM D-3034.

## Cutting and Clamping tool for PLASSON Wastewater Saddle 45° Wye

4\_4703\_001

Sujetador + Sierra perforadora para Ramal con salida 45° para Aguas Residuales



## Clamping & Drilling Tool for 5758 Wastewater Saddle 90°

4\_4700\_004

Sujetador Perforador para Ramal de Servicio con salida 90°



# TECHNICAL SPECIFICATIONS

## Technical Specifications for Plasson ElectroFusion Fittings

### Fittings Material

Plasson Electrofusion Fittings are manufactured using PE 4710 black compounded resins listed in Plastic Pipe Institute (PPI) TR-4 and which conform to international standards for potable water, including NSF/ANSI 61.

### Pressure Rating

- Plasson EF Coupling Type Fittings 1 1/4" and larger are rated to 200 psi (water) and the equivalent MAOP (gas) in accordance with governing regulations
- Plasson EF Couplings smaller than 1 1/4" IPS and Plasson Saddle Type Fittings are rated to 160 psi (water) and the equivalent MAOP (gas) in accordance with governing regulations
- Wastewater saddles are rated 25 ft. of water (10.8 psi).

**Note:** for further details, see the notations on each fitting or consult your Plasson / representative

### Suitable Pipe Materials

Electrofusion approved on pipe material: PE 2406/2708, PE 3408/3608 and PE 4710.

### Tapping Saddles

All integral cutters are POM/Brass or Brass and are pre-drilled to allow pressure testing prior to tapping.

Approved wall thickness for tapping saddle cutters:

- For diameters  $\leq 6$  DIPS, wall thickness  $SDR \geq 9$
- For diameters  $> 6$  DIPS, please consult your Plasson representative

### Fusion Parameters

Fusion time and cooling time are clearly marked on the barcode label of each and every fitting. In addition, they may be obtained using a barcode reader. Couplings of diameter  $\leq 12$  IPS and wastewater saddles have a red colored self-recognition terminal pin that communicates fusion time automatically to Plasson Controllers (the Smart-System solution) when the terminals are connected according to instructions.

All Plasson's fittings may be welded successfully at ambient temperatures from 14 to 113 °F (-10 to 45 °C). For more details please contact your Plasson representative.

### Standards

Plasson ElectroFusion fittings are designed, tested and quality controlled in accordance with Plasson's internal standards. These standards are based on the following American standards:

- ASTM F1055
- ASTM D2513
- ASTM F2897
- AWWA C906
- NSF/ANSI 61
- FM 1613 (FM approved fittings only)

### Quality

Plasson has incorporated a quality assurance system in accordance with ISO 9001. Operating approval according to ISO 9001 was granted to Plasson by the Israel Standards Institute. The ISO 9001 quality assurance system imposes stringent standards of control throughout the manufacturing processes.

## Abbreviations used on the product description pages of this catalog:

A, A1	Height of shroud from centerline	H	Height
B	Width	L, L1, L2	Length
d, d1	Nominal diameter of fitting or outlet	W	Weight
D, D1	Diameter	UC	Units per carton
G, R	Threaded outlet diameter		

### Dimensions in inches, weights in pounds

Whereas the products shown in this catalog illustrate and describe the current state of their development, Plasson reserves the right at all times to make technical alterations catalogue as it shall see fit to its products. Although every care has been taken in the preparation of the information, specifications and other data included alterations to the catalog as it shall see fit for its products, we cannot rule out inadvertent errors or omissions. Purchasers should take into account possible deviations or variations which will not substantially diminish the functionality or performance of the products.

Plasson® is the registered trademark of Plasson Ltd. or Plasson Maagan Michael Industries Ltd.

Plasson's products are protected by patents, trademark, design and copyright laws.

# ESPECIFICACIONES TECNICAS

## Especificaciones técnicas para los accesorios ElectroFusion de Plasson

### Material de los accesorios

Los accesorios Plasson para electrofusión se fabrican utilizando las resinas compuestas negras PE 4710 enumeradas en el Plastic Pipe Institute (PPI) TR-4 y que cumplen con los estándares internacionales para agua potable, incluyendo NSF / ANSI 61.

### Presiones nominales

- Los accesorios tipo acoplamiento Plasson EF de 1 1/4 "y mayores tienen una capacidad nominal de 200 psi (agua) y el equivalente a MAOP (gas) de acuerdo con las regulaciones vigentes
- Acoplamientos Plasson EF menores de 1 1/4 "IPS y Los accesorios tipo silla de montar Plasson tienen una clasificación de 160 psi (agua) y el equivalente MAOP (gas) de acuerdo con regulaciones vigentes
- Las monturas para aguas residuales están clasificadas para 25 pies de agua (10.8 psi).

Nota: para obtener más información, consulte la etiqueta de cada accesorio o diríjase a su representante de Plasson

### Materiales de Tuberías adecuadas

La electrofusión está aprobada para tuberías de los siguientes materiales: PE 2406/2708, PE 3408/3608 y PE 4710.

### Tomas de servicio

Cortadores integrales de latón y pre-perforados para permitir la prueba de presión antes de instalar la toma de servicio. Grosos de pared aprobados para cortadores de tomas de servicio:

- Para diámetros  $\leq 6$  DIPS, grosor de pared  $SDR \geq 9$
- Para diámetros  $> 6$  DIPS, consulte a su representante de Plasson

### Parámetros de fusión

Los tiempos de fusión y enfriamiento están claramente marcados en la etiqueta con el código de barras de cada accesorio. Además, pueden obtenerse mediante un lector de código de barras. Los enlaces con diámetros  $\leq 1.2$  IPS y las tomas para aguas residuales tienen un "pin" terminal de autoreconocimiento, de color rojo, que comunica automáticamente los tiempos de fusión a las soldadoras automáticas de Plasson (del sistema inteligente) siempre que se haya conectado conforme a las instrucciones. Todos los accesorios de Plasson pueden soldarse a temperaturas ambientes de -10 to 45 °C (14 a 113 °F). Para obtener más información, consulte a su representante de Plasson.

### Normativas

El diseño, las pruebas y el control de calidad de los accesorios ElectroFusion de Plasson se realizan de conformidad con las normativas internas de Plasson, que se basan en las siguientes normativas internacionales:

- ASTM F1055
- ASTM D2513
- ASTM F2897
- AWWA C906
- NSF/ANSI 61
- FM 1613 (Solo accesorios aprobados por FM)

### Calidad

Plasson ha incorporado un sistema de aseguramiento de calidad acorde a la normativa ISO 9001, que ha sido homologado a esa normativa por el Instituto Israelí de Normas Industriales. El sistema de aseguramiento de calidad según la normativa ISO 9001 impone la estricta observación de las directivas de control a lo largo del proceso de fabricación.

## Abreviaturas utilizadas en la descripción de productos de este catálogo:

A, A1	Altura desde la línea central a la cubierta del resistor	H	Altura
B	Ancho	L, L1, L2	Longitud
d, d1	Diámetro nominal del accesorio o salida	W	Peso
D, D1	Diámetro	UC	Cantidad por caja de cartón
G, R	Diámetro de la salida roscada		

### Dimensiones en pulgadas, peso en libras

Mientras que los productos que se muestran en este catálogo ilustran y describen el estado actual de su desarrollo, Plasson se reserva el derecho en todo momento de realizar un catálogo de modificaciones técnicas como mejor le parezca a sus productos. Aunque se han tomado todas las precauciones en la preparación de la información, las especificaciones y otros datos incluyeron alteraciones en el catálogo como mejor se adapte a sus productos, no podemos descartar errores u omisiones inadvertidos. Los compradores deben tener en cuenta posibles desviaciones o variaciones que no disminuirán sustancialmente la funcionalidad o el rendimiento de los productos. Plasson® es la marca registrada de Plasson Ltd. o Plasson Maagan Michael Industries Ltd. Los productos de Plasson están protegidos por patentes, marcas registradas, diseños y leyes de derechos de autor.

# CONTROLLERS

## Polymatic Plus w/ USB & Bluetooth

3F2306-303

### Universal Control Box

- Barcode-System
- Plasson Smart Fuse System
- GPS - (in Smart Fuse App)
- Manual-Mode
- Data Recording with USB-Interface
- Traceability functions conform to ASTM F2897
- Bluetooth
- Plasson Smart Fuse App



### Technical Data

ISO 12176-2 Class	P2 4 U S1 V AK D X
Input Voltage	110V ~/AC, (90V-150V)
Input Current	40A
Input Frequency	50Hz (40-70Hz)
Power Factor	cos p < 0.6 - 0.9 (Phase Angle Control)
Output Voltage	8-48V AC/~
Output Current	40A (max. 110A)
Energy Adjustment	Temperature Compensation
Power Consumption	4800VA
Temperature Range	-10 °F to 122 °F
Protection Class	CE, IP54, Class 2
Weight incl. Cables	50lbs
Main Supply Cable	16.4
Welding Cable	16.4
Welding Terminals	4.0mm/4.7mm Universal Adapter Tips
Display	4 x 20 Characters (alphanumeric), background lighting
Dimensions	17.3"x15"x12.6



### Monitoring Functions

Input	Voltage / Current / Frequency
Output	Voltage / Resistance / Contact / Short Circuit / Current Monitoring
Other	System / Working Temperature / Service
Error Messages	Plain Text / Acoustic Signal

### Enclosed Parts

Items	Control Box, Transport Box, 4.0mm/4.7mm Universal Adapter Tips, Instruction Manual, USB-flash memory
-------	--

### Data Recording-Polymatic Plus

Interface	USB (USB-flash memory included)
Data format	PDF / CSV

### Recorded Data

General Data	Commission Number (40 digits alphanumeric) Weather (DVS) / Joint Number / Report Number
Fusion Data	Voltage / Current / Nominal and Actual Welding Time / Mode / Resistance / Error Messages with 10 Voltage-Current Values
Device Data	Serial Number / Inventory Number / Date of Last Service / Working Hours / System Configuration
Operator Code	Barcode (PF or ISO 12176-3) for operator identification and access to manual input and system configuration
Weather Condition	DVS 2207 / 2208
Welding Barcode	ISO-13950

## Polycode Plus w/ USB & Bluetooth

3\_2308S324

### Control box for welding of small fittings

For all EF fittings up to 160mm\* / 6" IPS  
mounted in plastic suitcase



# CONTROLLERS

## Technical specifications

Output current	75 A (54 A peak current)
Welding voltage	8-48 V
Power supply	110 VAC
Weight	24.25 lbs
Dimensions	19x7x15 in
Welding cable length	9 ft 8 in
Data recording	1000 welding cycles, downloadable by USB memory stick
Display	4 lines alphanumeric display, available in 26 languages

## Welding data input

Plasson SmartFuse automatic welding data input  
Plasson SmartFuse App via bluetooth \*smart phone  
Barcode reading (including temperature compensation) Manual input of barcode digits  
\* At long welding cycles, cool down time equal to the welding time is required



## Polycontrol Plus w/ USB & Bluetooth

3F0318V112

### Universal Control Box

- Universal Barcode Scanner
- Plasson Smart Fuse System
- Manual Mode
- Data Recording with USB-Interface
- Bluetooth (available)
- Plasson Smart Fuse App
- GPS (in Smart Fuse App)



## Technical Data

ISO 12176-2 Class	P2 3 U S1 V AK D X
Input Voltage	230V ~/AC, (190V-300V)
Input Current	16A
Input Frequency	50Hz (40-70Hz)
Output Voltage	8-48V DC
Output Current	(t=∞) 85A (max. 110A)
Energy Adjustment	Temperature Compensation, Inductivity compensation
Temperature Range	14°F - 122°F (14 °F to 122 °F)
Protection Class	IP54
Weight incl. Cables	34 Lbs
Main Supply Cable	14 Ft
Welding Cable	9 Ft
Welding Terminals	4.0mm
Display	4 x 20 Characters (alphanumerical), background lighting
Dimension	8.66" x 12.48" x 17.12"
Suitable Generator	220-240 V, 4.5 kVA (minimum 16A on one phase)

## Monitoring Functions

Input	Voltage / Current / Frequency
Output	Voltage / Resistance / Contact / Short Circuit / Current Monitoring
Other	System / Working Temperature / Service
Error Messages	Plain Text / Acoustic Signal

## Enclosed Parts

Items	Control Box, Transport Box, Adapter 4.0/4.7mm, Instruction Manual, USB-flash memory
-------	---

## Recorded Data

Interface	USB (USB-flash memory included)
Data format	PDF / CSV

# SOLDADORAS

## Polymatic Plus con USB y Bluetooth

3F2306\_303

### Soldadora universal

- wwCódigo de barras
- El sistema inteligente de Plasson
- Modo MANUAL
- Registro de datos mediante interfaz USB
- Funciones de rastreo según la normativa ISO12176-3/4



### Datos técnicos

Clase ISO 12176-2	P2 4 U S1 V AK D X
Voltaje de entrada	110V ~/AC, (90V-150V)
Corriente de entrada	40A
Frecuencia de entrada	50Hz (40-70Hz)
Factor de potencia	cos p < 0.6 – 0.9 (Control de ángulo de fase)
Tensión de salida	8-48V AC/~
Corriente de salida	40A (max. 110A)
Ajuste de energía	Compensación de temperatura
El consumo de energía	4800VA
Rango de temperatura	-10°F to 122°F
Clase de protección	CE, IP54, Clase 2
Peso incl. Cables	50 libras
Cable de alimentación principal	16.4
Cable de soldadura	16.4
Terminales de soldadura	Puntas adaptadoras universales de 4,0 mm / 4,7 mm
Monitor	4 x 20 caracteres (alfanuméricos), iluminación de fondo
Dimensiones	17.3"x15"12.6

 **PLASSON**<sup>®</sup>  
SMARTFUSE

### Funciones de monitoreo

Entrada	Tensión / Corriente / Frecuencia
Salida	Voltaje / resistencia / contacto / cortocircuito / monitoreo de corriente
Otro	Sistema / Temperatura de trabajo / Servicio
Error de mensajes	Texto sin formato / señal acústica

### Partes cerradas

Artículos	Caja de control, caja de transporte, puntas de adaptador universal de 4,0 mm / 4,7 mm, manual de instrucciones, memoria flash USB
-----------	---

### Grabación de datos-Polymatic Plus

Interfaz	USB (memoria flash USB incluida)
Formato de datos	PDF / CSV

### Datos grabados

Información General	Número de Comisión (40 dígitos alfanuméricos) Clima (DVS) / Número conjunto / Número de informe
Datos de fusión	Tensión / corriente / nominal y tiempo real de soldadura / modo / resistencia / mensajes de error con 10 valores de corriente de voltaje
Datos del dispositivo	Número de serie / Número de inventario / Fecha del último servicio / Horas de trabajo / Configuración del sistema
Código de operador	Código de barras (PF o ISO 12176-3) para la identificación del operador y el acceso a la entrada manual y la configuración del sistema
Condición climática	DVS 2207/2208
Código de barras de soldadura	ISO-13950

## Polycode Plus con USB y Bluetooth

3\_2308S324

### Caja de control para la soldadura de pequeños accesorios.

Para todos los accesorios EF de hasta 160 mm \* / 6 "IPS montado en maleta de plástico



# SOLDADORAS

## Especificaciones técnicas

Corriente de salida	75 A (54 A Corriente pico)
Voltaje de soldadura	8-48 V
Fuente de alimentación	110 VAC
Peso	24.25 libras
Dimensiones	19x7x15 in
Longitud del cable de soldadura	9 ft 8 in
Registro de datos	1000 ciclos de soldadura, descargables mediante memoria USB.
Monitor	Pantalla alfanumérica de 4 líneas, disponible en 26 idiomas.

## Entrada de datos de soldadura

Entrada de datos de soldadura automática Plasson SmartFuse  
Aplicación Plasson SmartFuse a través de teléfono inteligente Bluetooth\*  
Lectura de códigos de barras (incluida la compensación de temperatura)  
Entrada manual de dígitos de códigos de barras

\* En ciclos largos de soldadura, se requiere un tiempo de enfriamiento igual al tiempo de soldadura



## Polycontrol Plus con USB y Bluetooth

3F0318V112

### Caja de control universal

- Escáner de código de barras universal
- Sistema de fusibles inteligente Plasson
- Modo manual
- Grabación de datos con interfaz USB
- Bluetooth (disponible)
- Aplicación Plasson Smart Fuse
- GPS (en la aplicación Smart Fuse)



## Datos técnicos

Clase ISO 12176-2	P2 3 U S1 V AK D X
Voltaje de entrada	230V ~/AC, (190V-300V)
Corriente de entrada	16A
Frecuencia de entrada	50Hz (40-70Hz)
Tensión de salida	8-48V DC
Corriente de salida	(t=∞) 85A (max. 110A)
Ajuste de energía	Compensación de temperatura, Compensación de inductividad
Rango de temperatura	14°F - 122°F (14 °F to 122 °F)
Clase de protección	IP54
Peso incl. Cables	34 libras
Cable de alimentación principal	14 Ft
Cable de soldadura	9 Ft
Terminales de soldadura	4.0mm
Monitor	4 x 20 caracteres (alfanuméricos), iluminación de fondo
Dimensión	8.66" x 12.48" x 17.12"
Generador adecuado	220-240 V, 4.5 kVA (mínimo 16A en una fase)

## Funciones de monitoreo

Entrada	Tensión / Corriente / Frecuencia
Salida	Voltaje / resistencia / contacto / cortocircuito / monitoreo de corriente
Otro	Sistema / Temperatura de trabajo / Servicio
Error de mensajes	Texto sin formato / señal acústica

## Partes cerradas

Artículos	Caja de control, caja de transporte, adaptador 4.0 / 4.7 mm, manual de instrucciones, memoria flash USB
-----------	---

## Datos grabados

Interfaz	USB (Memoria flash USB incluida)
Formato de datos	PDF / CSV



# INSTALLATION TOOLS

## Rotational Peelers

### Raspatubos Giratorios

4_4200_001	½" IPS – 2" IPS
4_4200_031	½" IPS – 4" DIPS
4_4200_032	3" IPS – 8" IPS
4_4200_033	4" IPS – 10" DIPS



## Chain Peelers

### Cadenas Raspadoras Giratorias

4_4200_013	4"IPS – 16" IPS
4_4200_009	10" IPS – 30" IPS
4_4200_029	10" IPS – 36" DIPS
4_4200_012	30" DIPS – 48" IPS
4_4200_012/1	30" DIPS – 54" IPS
4_4200_012/4	30" DIPS – 63" IPS



## Pipe End Peelers w/ Mandrels

### Raspatubos Mandriles

4_4200_103	Pipe End Peeler 3/4" - 2" IPS w/ Mandrels
4_4200S103	Pipe End Peeler 3/4" - 2" IPS w/ Mandrels + Cordless Drill



## Pipe End Peelers

### Raspatubos

4_4200_015	3" IPS – 6" DIPS
4_4200_027	4" IPS – 10" DIPS
4_4200_016	8" IPS – 16" IPS



## Mono-Dimensional U-Peelers

### U-Peelers Mono-Dimensionales

4_4800_060	2" IPS Mono-Dimensional U-Peeler
4_4800_114	4" IPS Mono-Dimensional U-Peeler
4_4800_168	6" IPS Mono-Dimensional U-Peeler
4_4800_219	8" IPS Mono-Dimensional U-Peeler



## Electric Peelers

### Raspatubos Eléctricos

4_4200_025	Electric Saddle Peeler (110V)
4_4200_026	Electric Saddle Peeler Cordless (230V)
4_4200_028	Pneumatic Saddle Peeler
4_4200_034	Electric Chain Peeler for EF Couplings 14" IPS – 46" IPS (110V)



# INSTALLATION TOOLS

## Rotary Pipe Cutting Circular Saws

### Cortadores de Tubería Giratorios

4_4401_006	8" IPS - 14" DIPS Rotary Pipe Cutting Saw (110V) w/ Shavings Collection Anti-Static Bag
4_4401_002	10" IPS - 20" DIPS Rotary Pipe Cutting Saw (230V) 2.56" Cutting Depth
4_4401_001	20" IPS - 42" DIPS Rotary Pipe Cutting Saw (230V) 3.35" Cutting Depth



## Pipe Clamping Tools

### Herramientas de sujeción de tubos

4_4300_000	3/4" IPS - 2" IPS EF Coupling/Elbow Adjustable Pipe Clamp
4_4300_001	1" IPS - 4" IPS EF Coupling/Elbow Adjustable Pipe Clamp
4_4300_002	4" IPS - 8" DIPS EF Coupling/Elbow Adjustable Pipe Clamp
4_4300_009	2" IPS - 8" DIPS EF Coupling/Elbow Adjustable Pipe Clamp
4_4300_025	2" IPS - 10" IPS EF Coupling/Elbow Adjustable Strap Clamp (4 Clamps)
4_4300_023	4" IPS - 22" IPS EF Coupling/Elbow Strap Clamp w/ 4 Clamps a 1 Angle Piece
4_4300_026	10" IPS - 30" IPS Pipe Clamp w/ Pulling Shoe for EF Couplers



## EF Accessories

### Accesorios EF

5_5200_001	Tangit EF Cleaning Detergent
5_5200_002	Tangit EF Cleaning Pads
FSA2388PEN00000	EF Pipe Scraping Marking Pen (Silver)
2_4701_035	EF Tapping Tee Tool (12mm Hex)
2_4701_036	HV Tapping Tee Tool w/ 5/8" Hex
2_0300_017	4.7mm to 4.0mm EF Terminal Adapter Tips - Straight (1 Pair)
2_0300_001	4.7mm to 4.0mm EF Terminal Adapter Tips - Angled (1 Pair)
2_0300_010	4.0mm to 4.7mm EF Terminal Adapter Tips - Straight (1 Pair)
2_0300_004	4.0mm to 4.7mm EF Terminal Adapter Tips - Angled (1 Pair)



## Re-Rounding Tools

### Redondeadores

4_4602_005	2" IPS - 6" DIPS Rounding Clamp
4_4602_003	4" IPS - 8" DIPS Rounding Clamp
4_4602_004	6" DIPS - 12" IPS Rounding Clamp
4_4602_009	10" IPS - 16" IPS Rounding Clamp
4_4602_017	16"DIPS-28"IPS Hydraulic Strap Re-Rounding Tool
4_4602_018	Extension Kit 28"IPS-48" DIPS for 4-4602-017
4_4602_019	16"DIPS-48"DIPS Hydraulic Strap Re-Rounding Tool

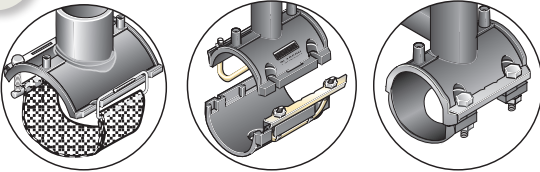


# INSTALLATION INSTRUCTIONS

## EF Saddle Installation Procedure

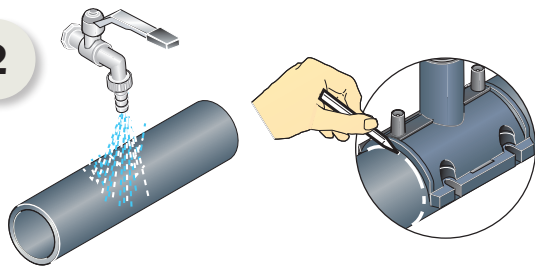
Welding instructions for all Plasson electrofusion saddles.

1



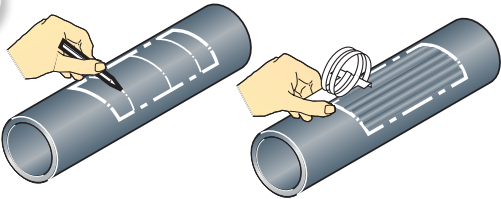
Clean pipe then draw saddle boundaries on pipe.

2



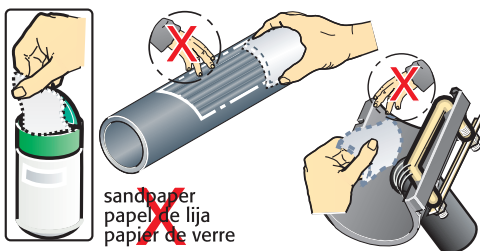
Add marks on pipe inside boundaries and scrape pipe fully inside perimeter.

3



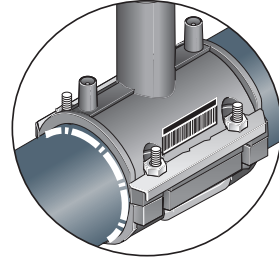
Degrease saddle surface and scraped pipe with appropriate cleaning agent.

4



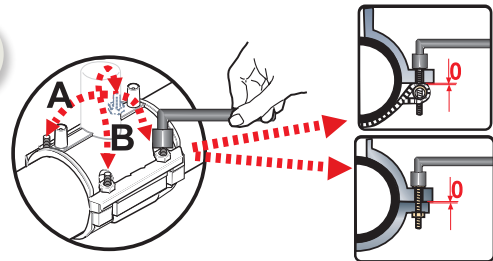
Assemble saddle on scraped pipe and tighten nuts and bolts crosswise.

5



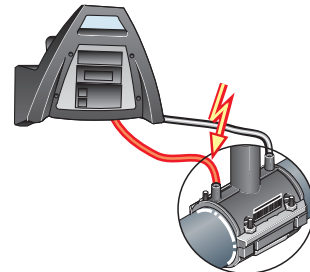
Tighten until upper and lower saddle parts are mated (zero gap).

6



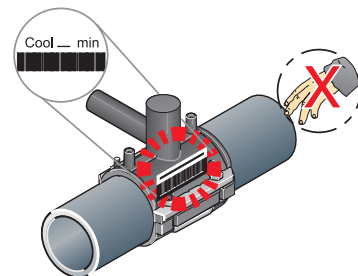
Fuse fitting.

7



Allow to cool. Cool additional 30 minutes prior to tapping and pressure testing.

8



# INSTALLATION INSTRUCTIONS

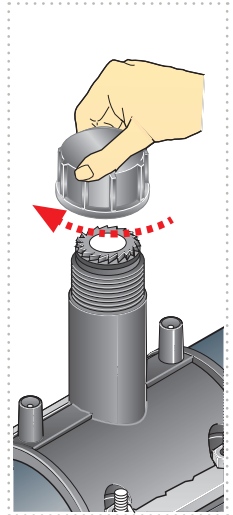
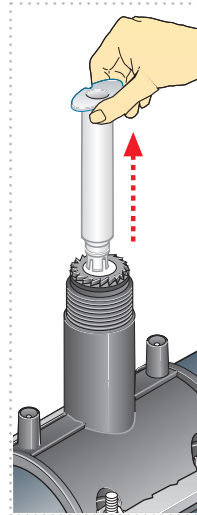
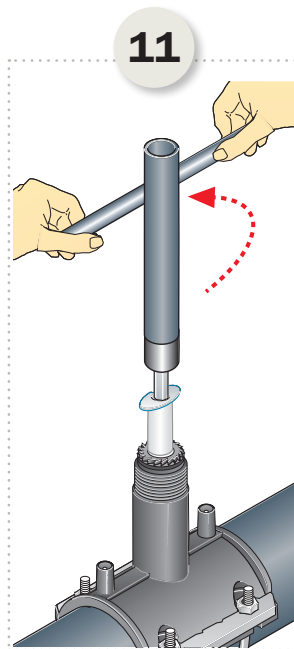
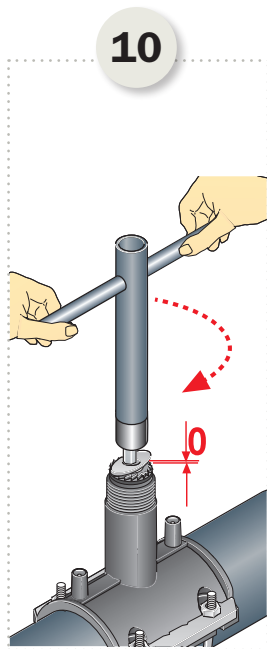
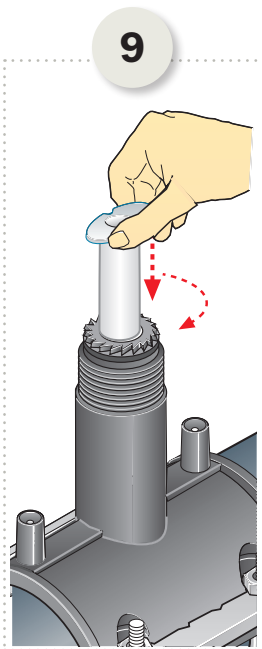
## Tapping Instructions for Tapping Saddles

Push down on sleeve to ensure correct starting position.

Tap pipe by turning wrench clockwise to lowermost position of the sleeve.

Unscrew to uppermost position (resistance increases significantly). Then add  $\frac{1}{2}$  turn, not more, to tighten firmly for good seal.

Remove sleeve, then screw on cap and tighten firmly.



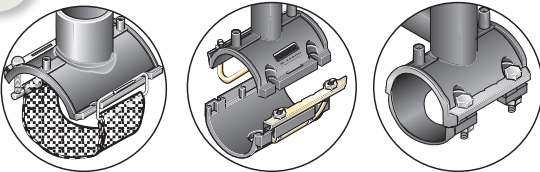
# INSTRUCCIONES DE MONTAJE

## Procedimiento de electrofusión de collarines

Instrucciones para la soldadura de todos los collarines de electrofusión de Plasson

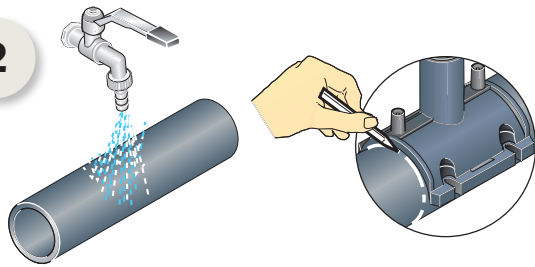
Monte el collarín sobre el tubo raspado y cierre las tuercas y tornillos en forma cruzada

1



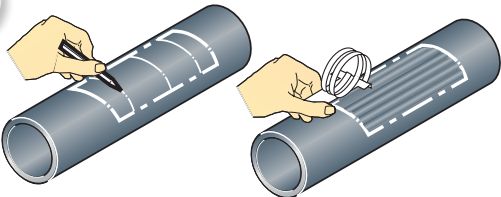
Limpie el tubo y marque en la superficie los límites del collarín

2



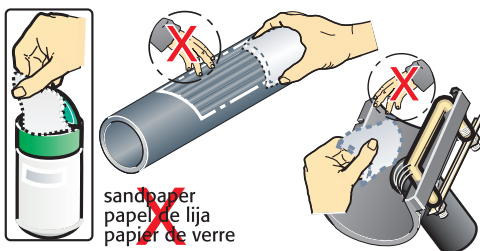
Añada marcas dentro de los límites y raspe el tubo dentro del perímetro marcado.

3

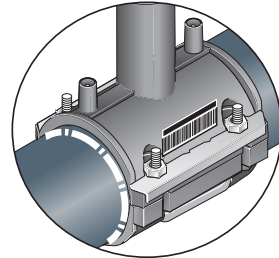


Desengrase la superficie del collarín y el tubo raspado con un líquido adecuado

4

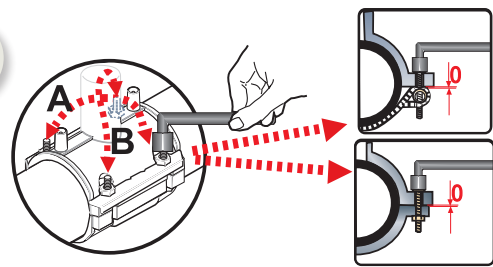


5



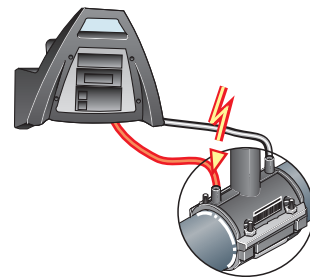
Ajuste hasta que la parte superior y la parte inferior del collarín coincidan completamente (sin espacio intermedio).

6



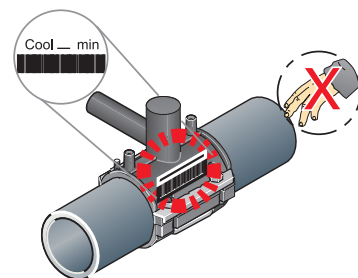
Efectúe la electrofusión del accesorio

7



Permita el enfriamiento. Adicione 30 minutos antes de conectarlo y hacer la prueba de presión

8



# INSTRUCCIONES DE MONTAJE

## Conexión de tomas de servicio

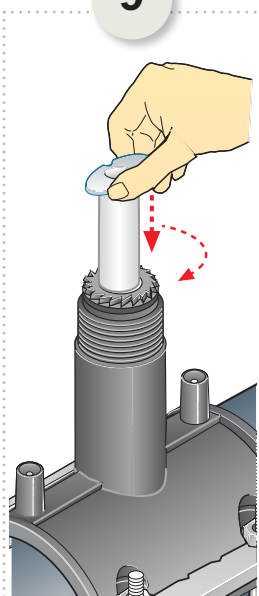
Empuje la manga hacia abajo para asegurar la correcta posición.

Perfore el tubo haciendo girar la llave en sentido horario hasta el punto más bajo de la manga.

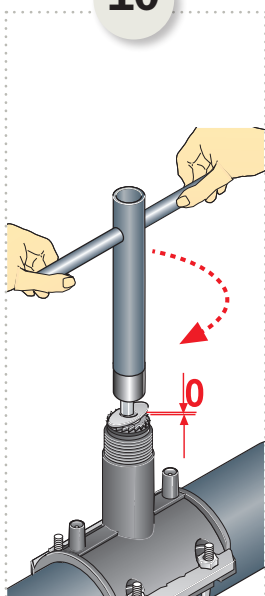
Desenrosque hasta la posición más alta (la resistencia aumenta notablemente), y luego añada  $\frac{1}{2}$  giro, no más, para ajustar con firmeza.

Retire la manga, atornille la tapa y ajuste firmemente.

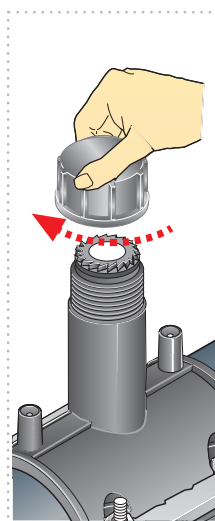
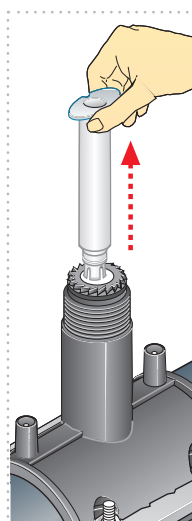
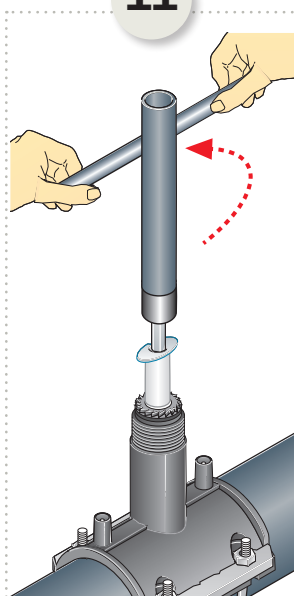
9



10



11

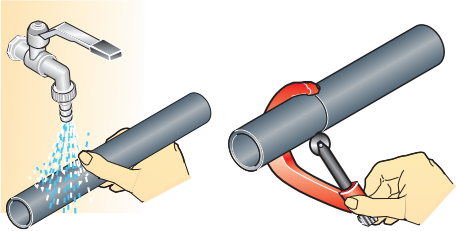


# INSTALLATION INSTRUCTIONS

## EF Coupler Installation Procedure

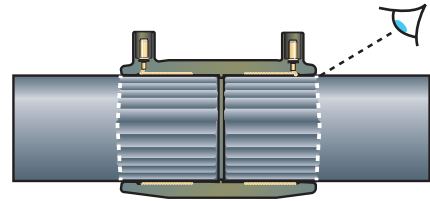
Clean pipe and cut ends squarely

1



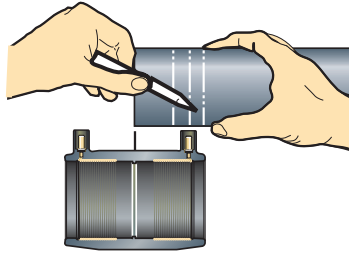
Stab pipe completely into fitting

5



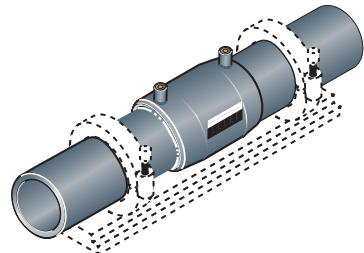
Mark stab depth on pipe

2



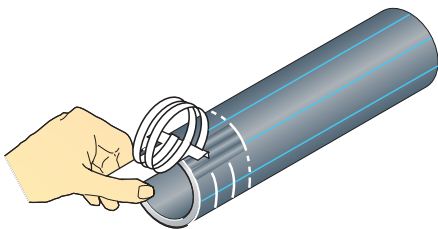
Align and clamp pipe

6



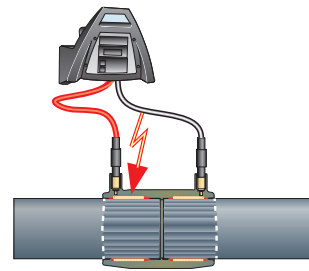
Scrape pipe

3



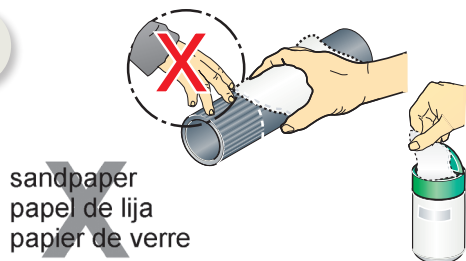
Fuse the joint

7



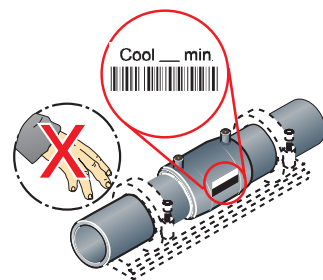
Clean with suitable degreasing agent

4



Do not disturb joint during cooling time

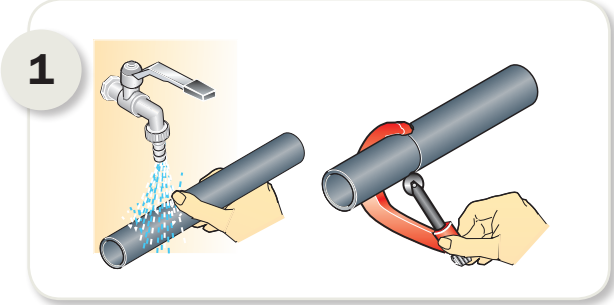
8



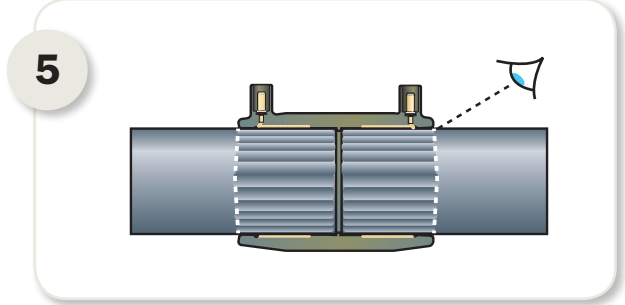
# INSTRUCCIONES DE MONTAJE

## Procedimiento de electrofusión de conectores

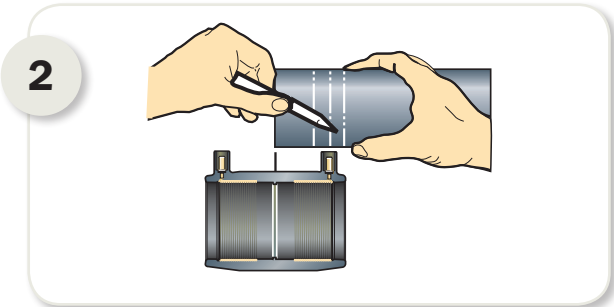
Limpié el tubo y corte el extremo en línea recta



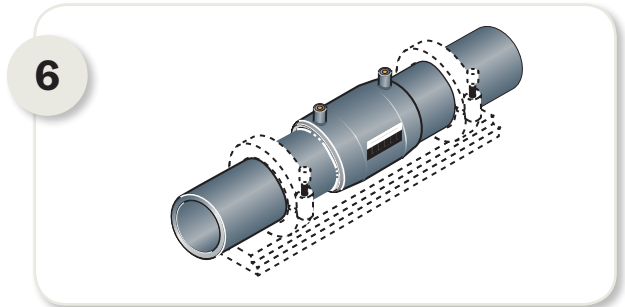
Introduzca completamente el tubo en el accesorio



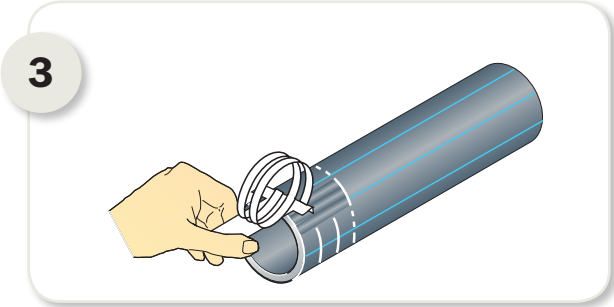
Marque la profundidad del accesorio en el tubo



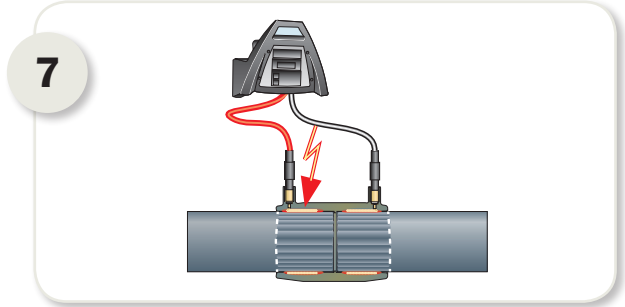
Alinee y coloque las abrazaderas en el tubo



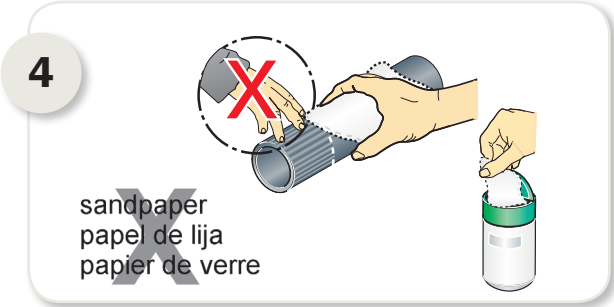
Raspe el tubo



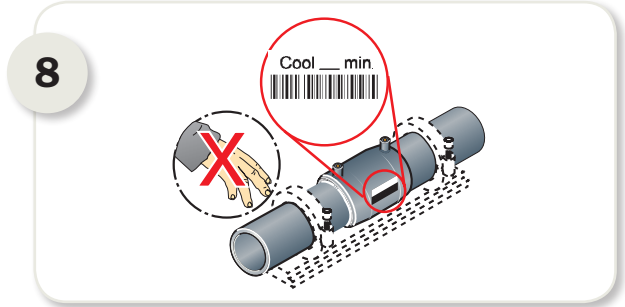
Efectúe la fusión de la junta



Limpié con un detergente adecuado



No toque la junta durante el periodo de enfriamiento





# Qualification of Plasson Electrofusion Fittings for Gas Distribution

## Standards:

- ASTM D2513-08b: Standard Specification for Thermoplastic Gas Pressure Pipe, Tubing, and Fittings
- ASTM F1055-98(2006): Standard Specification for Electrofusion Type Polyethylene Fittings for Outside Diameter Controlled Polyethylene Pipe and Tubing

## Assessment Requirements:

- Review and approval of new product test and validation plans
- Completion of 2 on-site quality audits of the test laboratory and manufacturing facility
- Verification of Plasson's capabilities to perform testing per ASTM F1055 and ASTM D2513
- Audit of Plasson's new product qualification data

## Results:

Based on this assessment, Jana attests that Plasson maintains:

- An ISO 9001:2000 Quality System covering manufacturing, design and testing certified by the Standards Institute of Israel
- Sophisticated manufacturing and information systems with complete raw material traceability; each serialized part is traced through manufacturing, testing and delivery
- A rigorous approach to in-process and batch release Quality Control testing in accordance with ASTM F1055 and ASTM D2513
- A comprehensive new product test plan to verify fitting performance per the requirements of ASTM F1055 and ASTM D2513
- A resin supply per the requirements of ASTM F1055 and ASTM D2513 and listed per PPI TR-4 as PE 4710
- A comprehensive validation plan with PE 2406, PE 3408 and PE 4710 pipe

**Based on this assessment, Jana attests that electrofusion fittings manufactured by Plasson are in conformance with ASTM F1055 and ASTM D2513.**

# PRODUCTS AVAILABLE FROM PLASSON

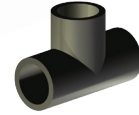
## Transition Fittings

½" groove and custom transition fittings in epoxy coated carbon steel, 316 stainless steel and brass. Larger sizes available upon request.



## Fabricated Fittings

2" to 65" HDPE fabricated elbows, tees, reducers, flange adapters and MJ adapters in PE 3608 and PE 4710 meeting AWWA C906, FM and D2513 for natural gas



## Custom Fittings

Prefabricated HDPE spools in any size, custom high pressure fittings in any size, manholes and structures up to 120" I.D.



## Flange Adapters, Stub Ends and Backup Rings

½" to 65" in PE4710



## Molded Fittings

½" to 12" Molded HDPE elbows, tees, reducers and caps in PE 4710



## Dual Containment Systems

1" to 36" simul-fuse pipe, fittings and structures



## Overwrapped Fabricated Fittings

Full pressure fittings and up to match the highest pressure systems available



## Spirolite Pipe, Fittings and Custom Manholes

Bell and spigot HDPE gravity pipe from 18" to 120" I.D. with a wide range of RSC classes



## Factory Mutual Fittings

FM class fittings 2" to 36" and the world's only class 335 system 2" to 20"



## Electrofusion Fittings

½" to 30" couplings, tapping tees, elbows, sewer laterals, reducers, 3-way tees, corp/transition saddles and branch saddles



## Electrofusion Equipment

EF control boxes, pipe clamps, re-rounding tools, scrapers, pipe cutters and accessories



## Compression Fittings

½" to 4" compression fittings for HDPE pipe



## Full Port HDPE Ball Valves

1" & 2" IPS full port ball valves, inquire for additional sizes



## NSF 61 Listing

Electrofusion & Compression Fittings



# PRODUCTOS DISPONIBLES DE PLASSON

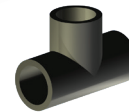
## Accesorios de Transición

De ½" a 12" NPT, Surco Victaulic y accesorios de transición de acero recubiertos con pintura epoxy. Acero inoxidable 304, 316 y latón. Otros tamaños disponibles según requerimiento.



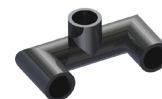
## Accesorios Fabricados

De 2" a 65" PEAD, codos, tes, reducciones, adaptadores de brida y adaptadores MJ PE 3608 y PE 4710 según AWWA C906, FM y D2513 para gas natural



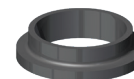
## Accesorios a pedido

Prefabricados de PEAD en cualquier tamaño, a medida para alta presión, cámaras subterráneas de saneamiento y estructuras a medida hasta 120" I.D.



## Adaptadores de brida, stub end y bridas de metal

De ½" a 65" en PE4710



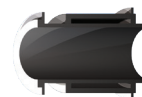
## Accesorios inyectados

De ½" a 12" codos, tes, reducciones, tapas y tapones en PE 4710



## Sistemas de doble contención

De 1" a 36" tuberías simul-fuse, accesorios y estructuras



## Accesorios fabricados con envoltura

Accesorios para sistemas de alta presión



## Tubos Spirolite, accesorios y cámaras de saneamiento a pedido.

Campanas y Espigas de PEAD para tubos gravitacionales desde 18" hasta 120" I.D. con un amplio rango de tipos de RSC



## Accesorios FM

FM tipo 150 y 200 accesorios desde 2" a 36" y el exclusivo sistema 365 desde 2" a 20"



## Accesorios de electrofusión

Desde ½" a 30" enlaces rectos, tomas, collarines, ramales, monturas, codos y ramales laterales de derivación para saneamiento



## Equipo para Electrofusion

Soldadoras, herramientas de sujeción de tubos, redondeadores, raspadores, cortadores de tubo y accesorios



## Accesorios de compresión

Desde ½" a 2" para unión de tubos de PEAD según norma ASTM en medidas IPS



## Válvulas de Bola "Full Port"

De 1" y 2" IPS. Pregunte por otras medidas



## Listado NSF 61

Accesorios de electrofusión y compresión





 **PLASSON**<sup>®</sup>  
USA

800.241.4175 | [www.PlassonUSA.com](http://www.PlassonUSA.com)



AMERICAN PETROLEUM INSTITUTE

